

Friday, Feb. 17, 2006:

- 6:00am

6:45am
- Call Crew, GWR 90
GWR 90 depart E. Strasburg.
GWR 90 (facing west).
- 6:46am

6:59am
- LO&S 10 depart E. Strasburg.
Set down at Esbensshade and Cherry Hill Road.
(Sunrise 6:55am)
LO&S 10 arrive E. Strasburg.
- 7:00am

7:10am
- GWR 90 runby from Black Horse Road to
Fairview Road.
GWR 90 reverse from Fairview Road to
Black Horse Road.
- 7:11am

7:19am
- LO&S 10 Depart E. Strasburg. Pick up,
set down at Esbensshade and Cherry Hill Road.
LO&S 10 arrive E. Strasburg.
- 7:20am

7:30am
- GWR 90 runby from Black Horse Road to
Fairview Road.
GWR90, LO&S 10 pick up passengers.
- 7:45am

8:30am
- Flats
Long Curve
- 9:00am

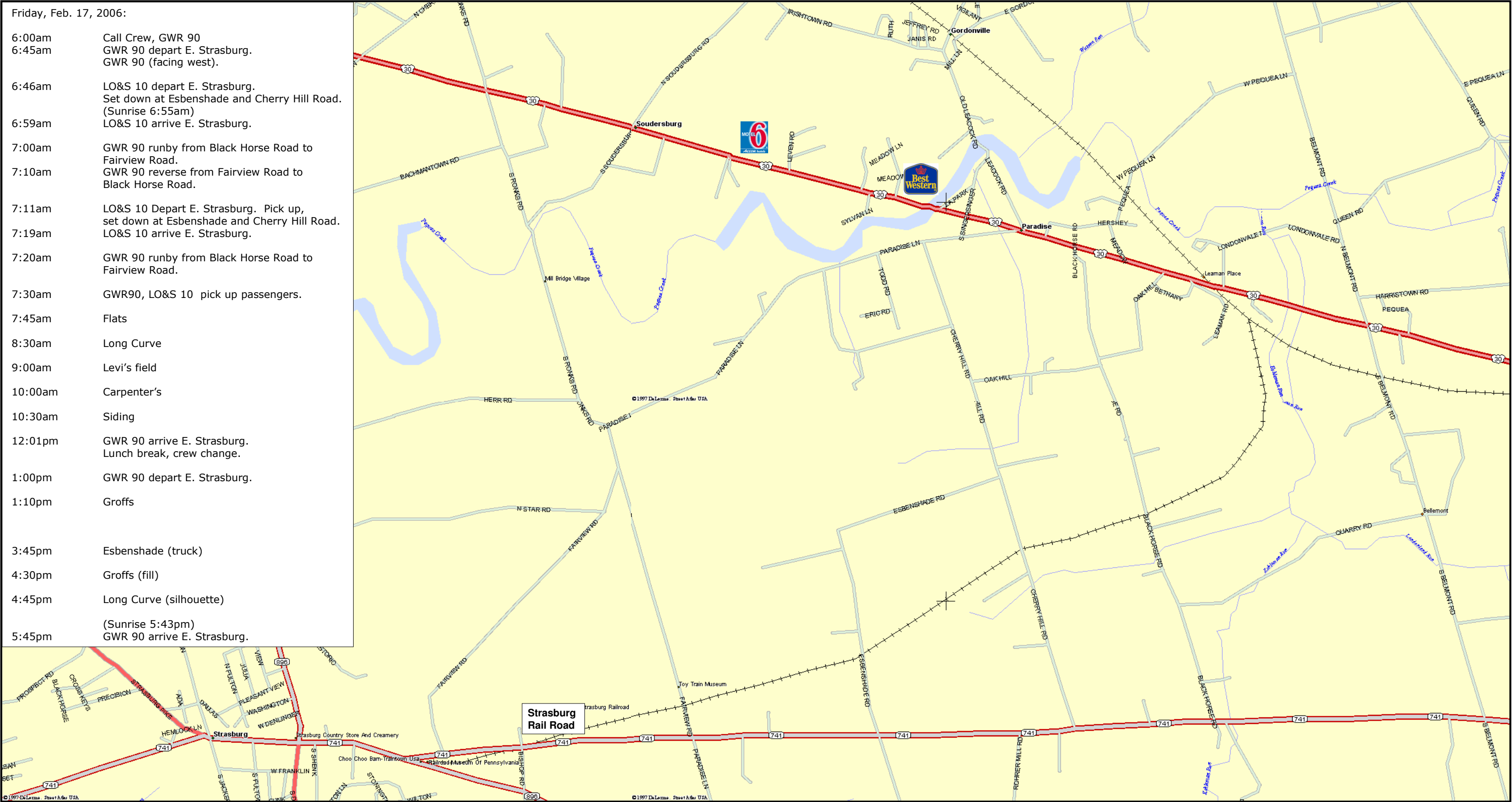
10:00am
- Levi's field
Carpenter's
- 10:30am

12:01pm
- Siding
GWR 90 arrive E. Strasburg.
Lunch break, crew change.
- 1:00pm

1:10pm
- GWR 90 depart E. Strasburg.
Groffs
- 3:45pm

4:30pm
- Esbensshade (truck)
Groffs (fill)
- 4:45pm

5:45pm
- Long Curve (silhouette)
(Sunrise 5:43pm)
GWR 90 arrive E. Strasburg.



Saturday, Feb. 18, 2006: Option Two

6:00am Call Crew, N&W 475
6:45am N&W 475 depart E. Strasburg.
N&W 475 (facing west).

6:46am LO&S 10 depart E. Strasburg.
Set down at Esbensshade and Cherry Hill Road.
(Sunrise 6:55am)
6:59am LO&S 10 arrive E. Strasburg.

7:00am N&W 475 runby from Black Horse Road to
Fairview Road.
7:10am N&W 475 reverse from Fairview Road to
Black Horse Road.

7:11am LO&S 10 Depart E. Strasburg. Pick up,
set down at Esbensshade and Cherry Hill Road.
7:19am LO&S 10 arrive E. Strasburg.

7:20am N&W 475 runby from Black Horse Road to
Fairview Road.

7:30am N&W 475, LO&S 10 pick up passengers.

7:45am Flats

8:30am Long Curve

9:00am Levi

10:00am Carpenter's

10:30am Siding

11:55am N&W 475 arrive E. Strasburg.
Lunch break, switch consist.

1:05pm N&W 475 depart E. Strasburg.

1:10pm Groffs

2:45pm N&W 475 arrive E. Strasburg.
Group photo with GWR 90. Switch consist.

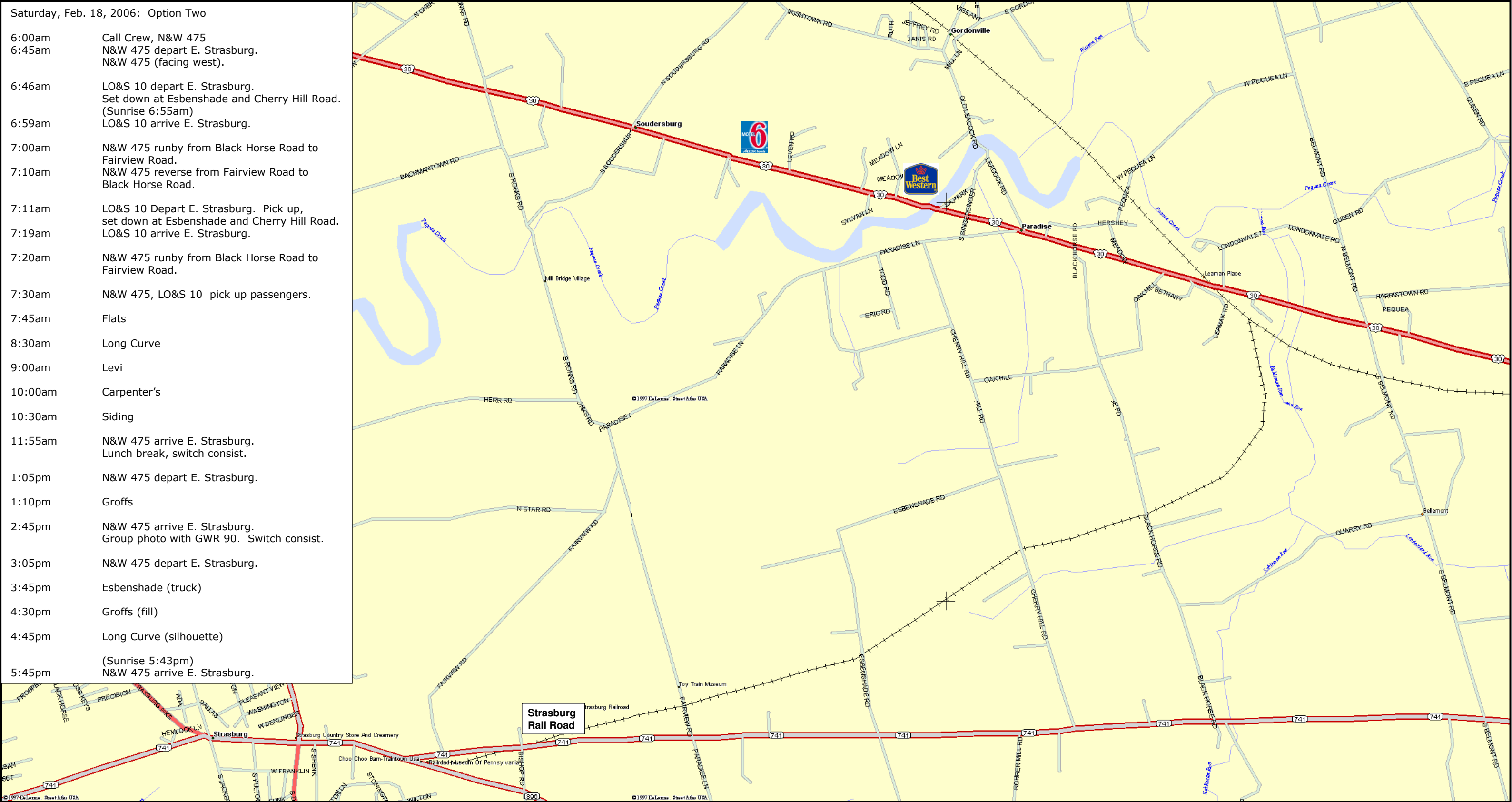
3:05pm N&W 475 depart E. Strasburg.

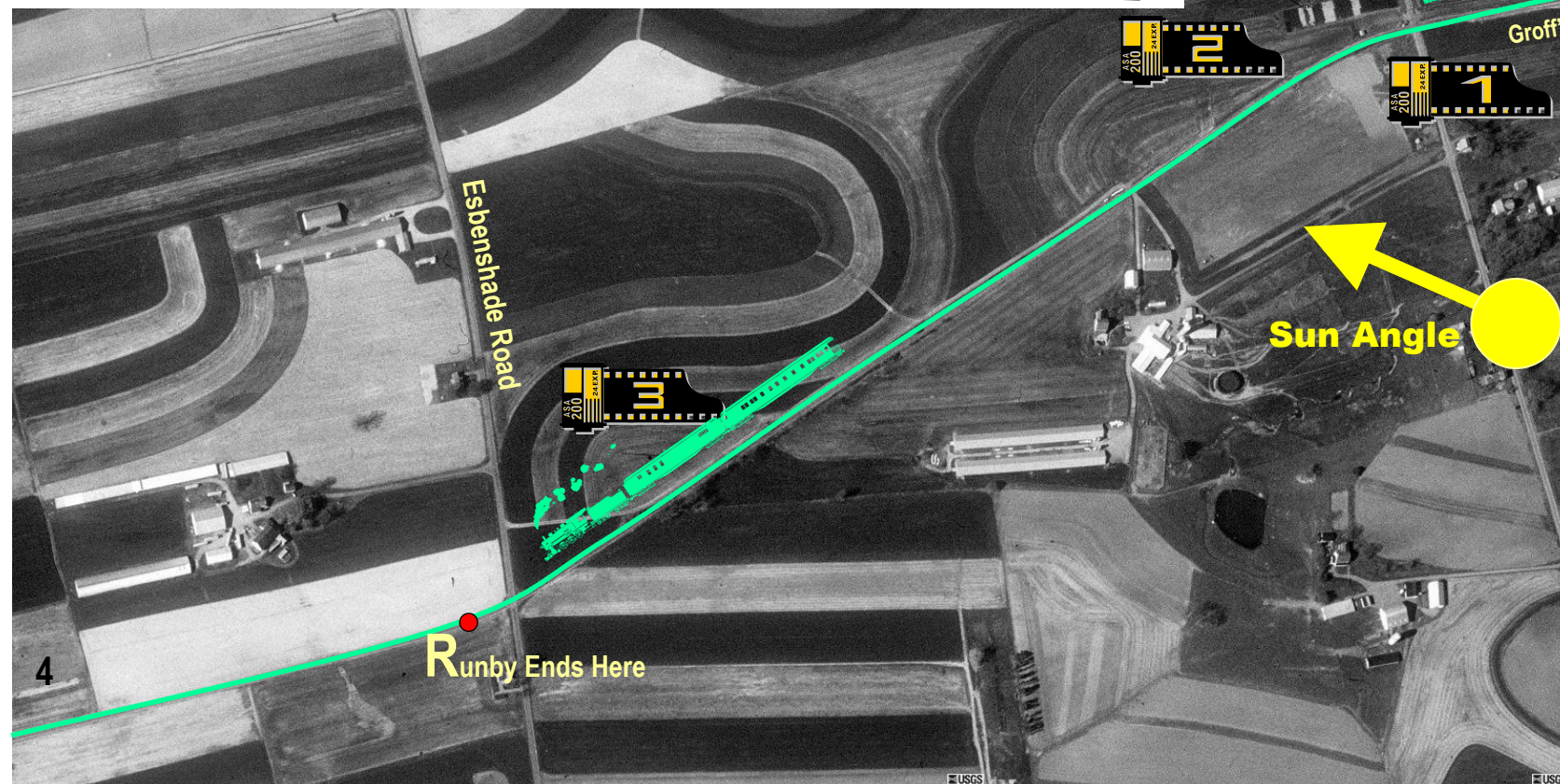
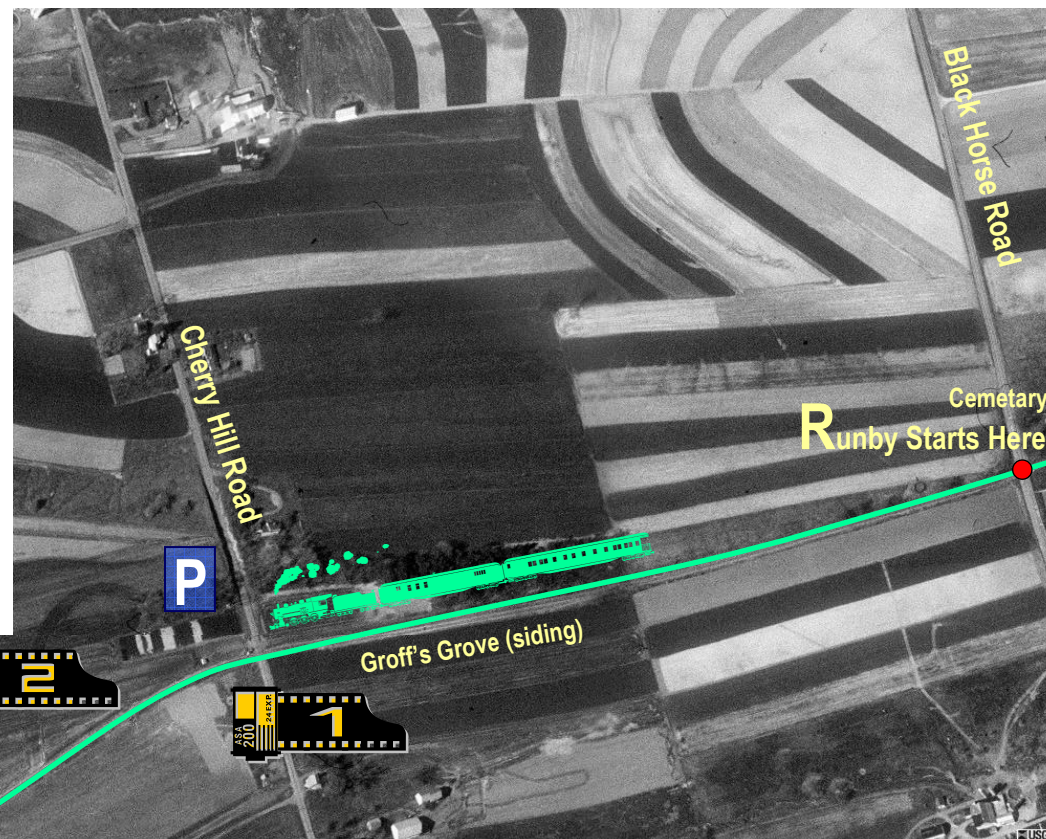
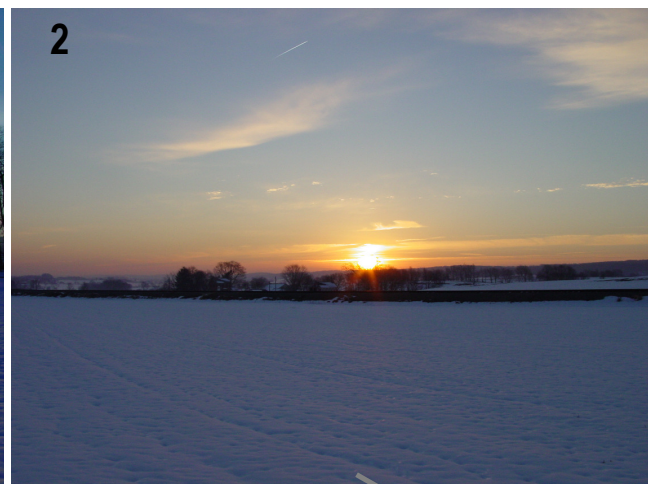
3:45pm Esbensshade (truck)

4:30pm Groffs (fill)

4:45pm Long Curve (silhouette)

(Sunrise 5:43pm)
5:45pm N&W 475 arrive E. Strasburg.





Friday, February 17, 2006
Departure Option 2
6:45am Depart E. Strasburg
7:00am First Runby

READ CAREFULLY. You must understand this document and choose your first photo location **BEFORE THE TRAIN DEPARTS.**

At approximately 7:00am, our train will start up from Carpenter's Crossing (Black Horse Road). It will run across Esbenshade Road, passing three photo locations without stopping:

Location 1 is Groff's Grove siding, in glint light.

Location 2 is a fill, with the train in silhouette.

Location 3 is a silhouette through trees, with a wagon passing in the foreground.

If you choose to photograph **Locations 3**, board the train at 6:30am. If you choose **Locations 1 or 2**, you may board the train at 6:30am, or drive directly to Cherry Crest Farm ("P"). Arrive by 6:45am.

Do not park at Esbenshade Road (Location 3). Park only at the Strasburg Rail Road Station, or at Cherry Crest Farm.

You may choose another photo location if you want. If you do, please do not stand in view of photographers at positions 1, 2, or 3. If any participant at these locations asks you to move, please do so - no discussion, no negotiations.

After reaching Esbenshade Road, the train will immediately reverse to Carpenter's Crossing and repeat the runby. You will have a BRIEF opportunity to change locations. Transportation will be provided between Locations 1, 2, and 3.

If conditions permit we will repeat the process a third time. If we do, you will have another opportunity to change locations.