

Saturday – 1 - King Road (NYC)



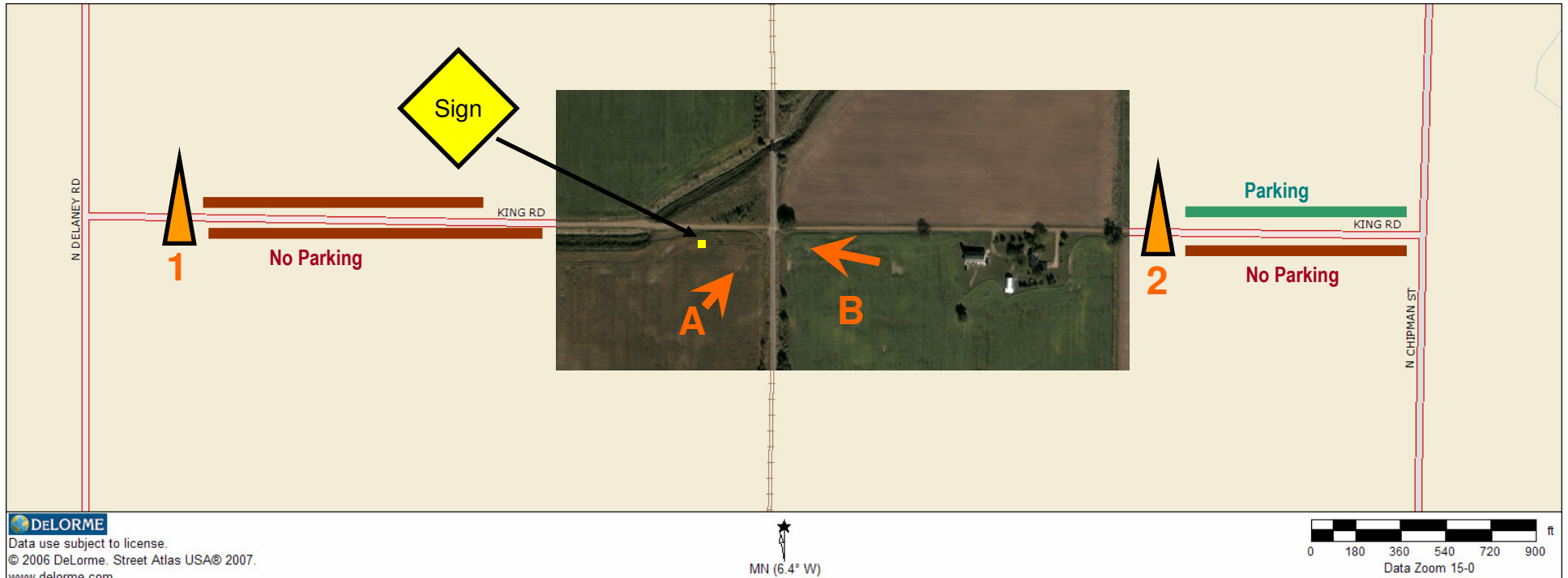
Road Crew Arrive 6:00am

Train Arrive 6:30am

First Runby 6:45am

Train Depart 7:15am

Road Crew Depart 7:30am for Vincent Road (1K)



Photographers will set up at “A”, then move to “B”.

Use vintage vehicles if available.

Saturday – 2 - Riley Road / Vincent Road (AA)



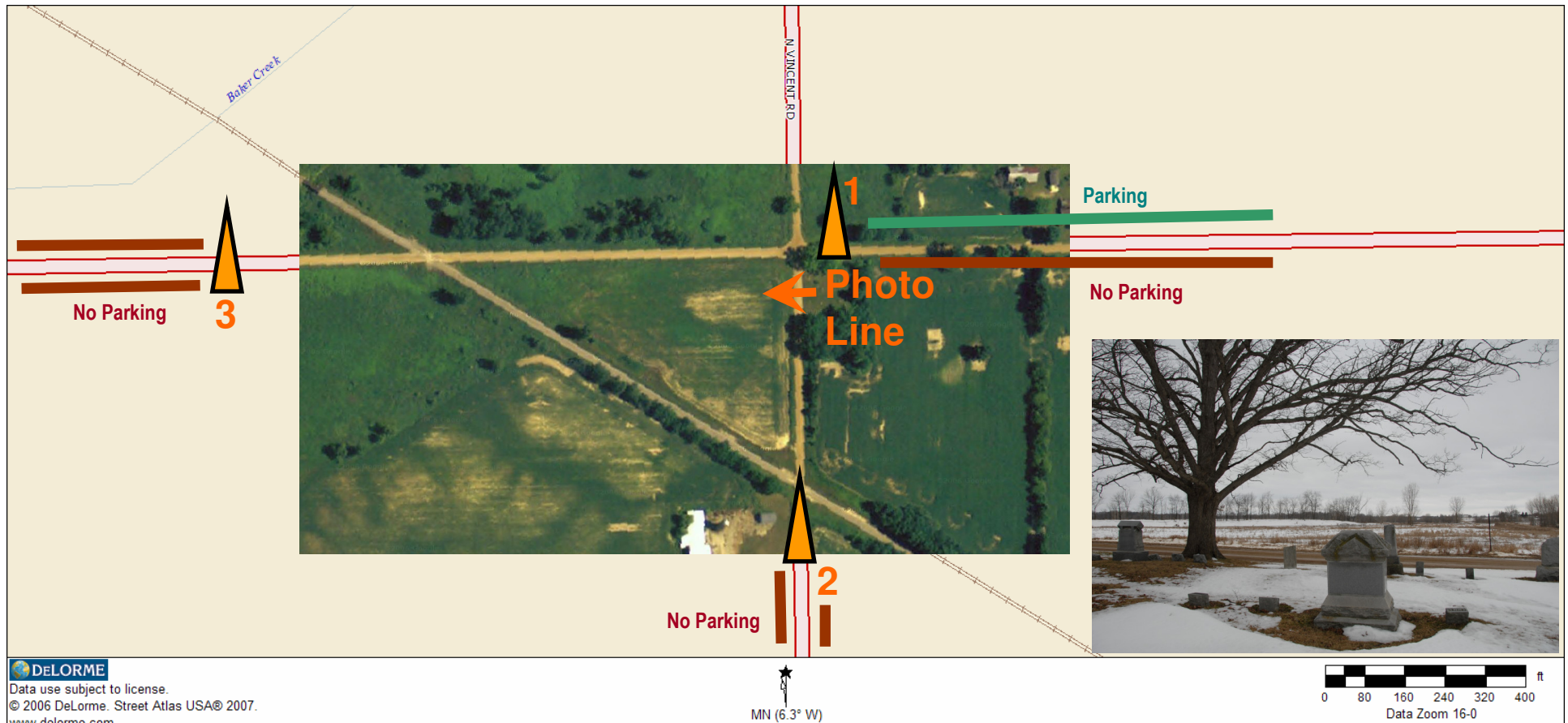
Road Crew Arrive 7:45am

Train Arrive 8:25am

First Runby 8:30am

Road Crew Depart 8:55am for King Road (AA) (1G)

Train Depart 9:00am



Saturday – 3 - King Road (AA)



Road Crew Arrive 9:00am

Train Arrive 9:10am

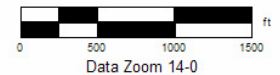
First Runby 9:15am

Road Crew Depart 9:40am for Baldwin Road (1H)

Train Depart 9:45am



Data use subject to license.
© 2006 DeLorme. Street Atlas USA® 2007.
www.delorme.com



Saturday – 4 - Baldwin Road (AA)



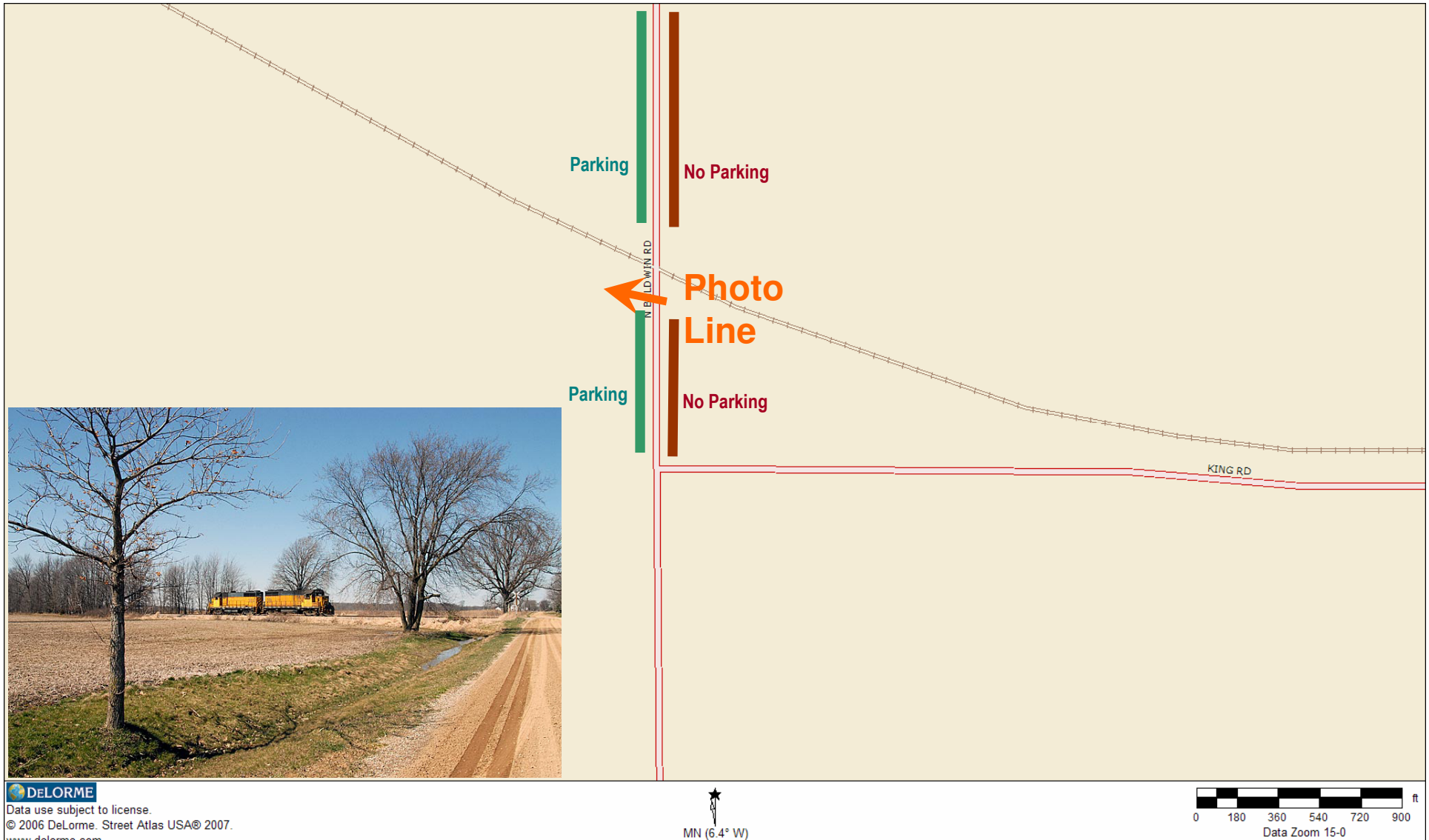
Road Crew Arrive 9:50am

Train Arrive 9:55am

First Runby 10:00am

Road Crew Depart 10:25am for Smith Road / Wilkinson Road (1F)

Train Depart 10:30am



Data use subject to license.
© 2006 DeLorme. Street Atlas USA® 2007.
www.delorme.com

MN (6.4° W)

0 180 360 540 720 900 ft
Data Zoom 15-0

Saturday – 5 - Smith Road / Wilkinson Road (AA)



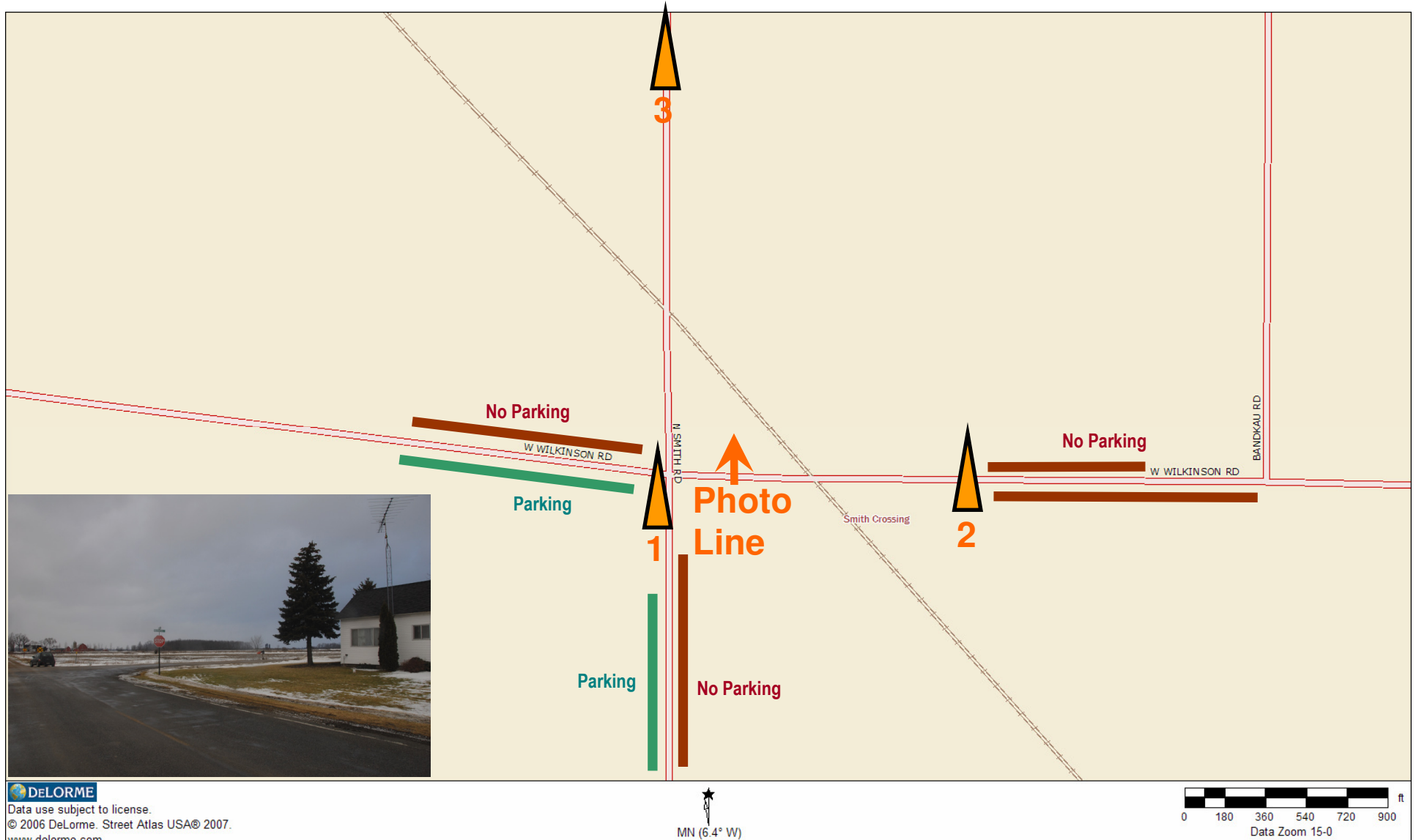
Road Crew Arrive 10:30am

Train Arrive 10:45am

First Runby 10:50am

Road Crew Depart 11:00am for Cass Street, Owosso (1E)

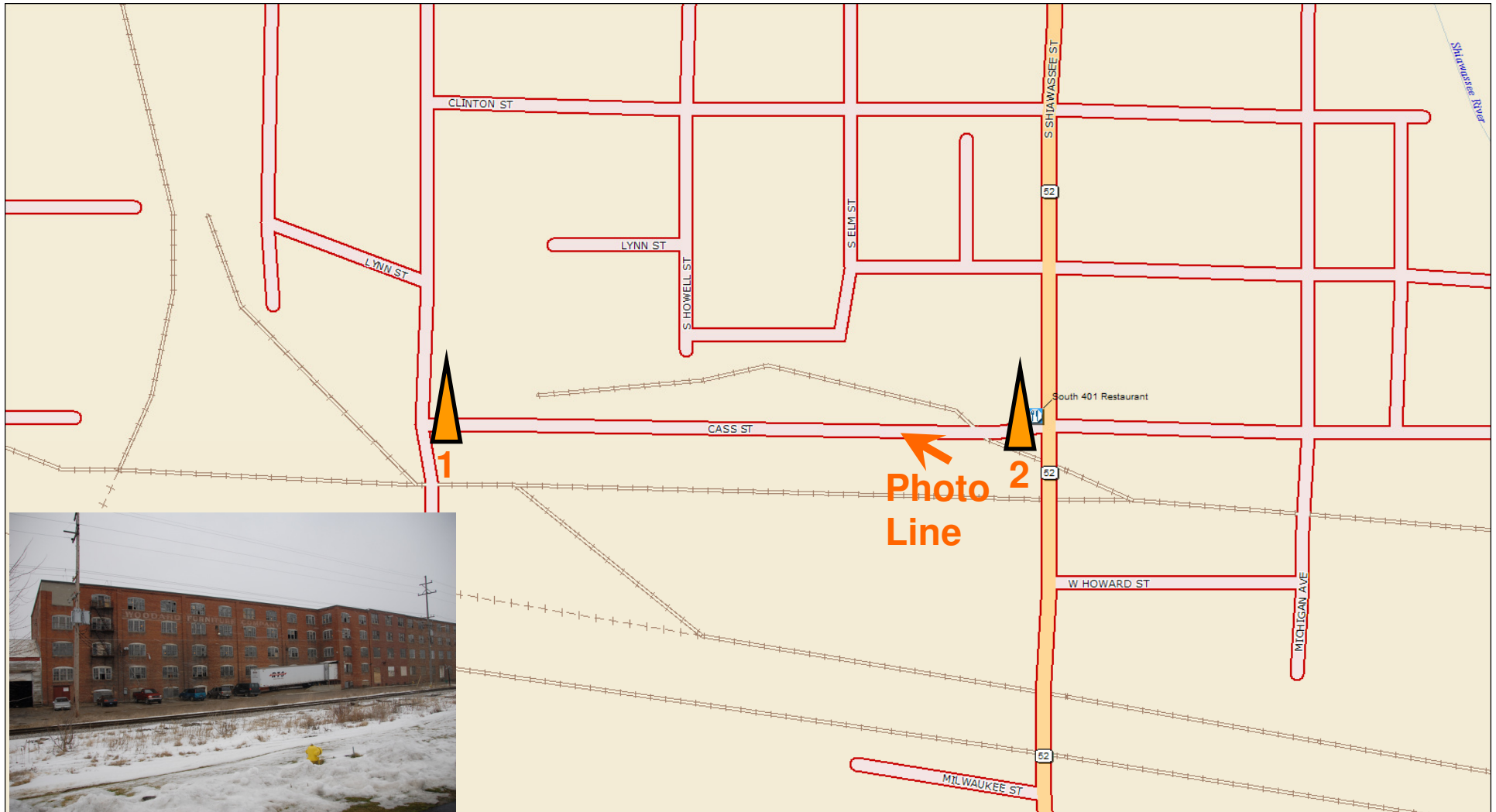
Train Depart 11:05am



Note: Cancelled.

Saturday – 6 – Cass Street (AA)

Road Crew Arrive 11:10am
Train Arrive 11:20am
First Runby 11:25am
Train Depart 11:45am
Road Crew Depart 11:45am for SRI



Saturday – 7 - Henderson Road (NYC)



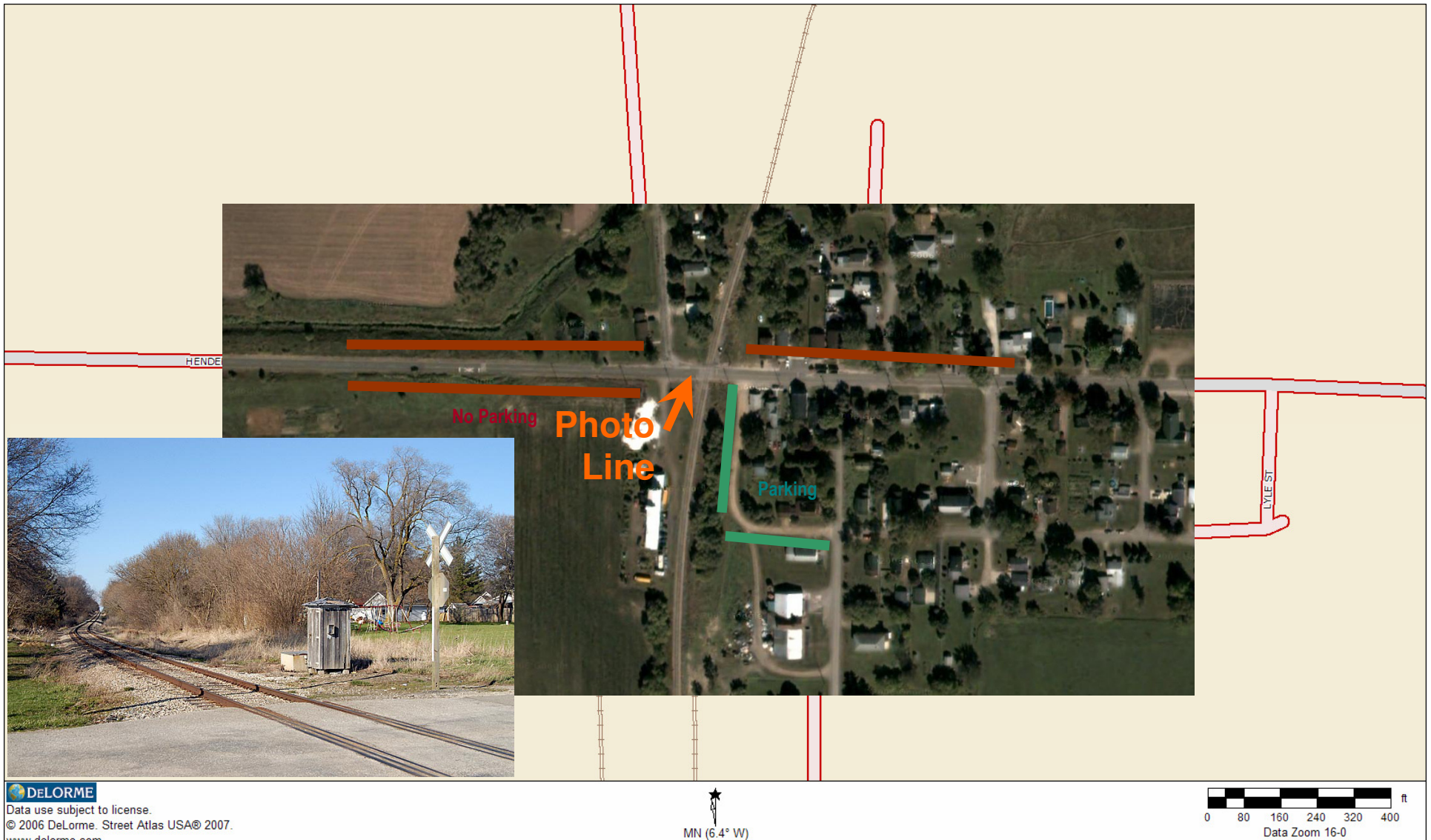
Road Crew Arrive 1:30pm

Train Arrive 2:00pm

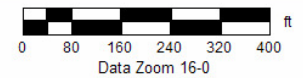
First Runby 2:05pm

Road Crew Depart 2:25pm for King Road (1B)

Train Depart 2:30pm



Data use subject to license.
© 2006 DeLorme. Street Atlas USA® 2007.
www.delorme.com



Note: Cancelled.

Saturday – 8 - King Road (NYC)



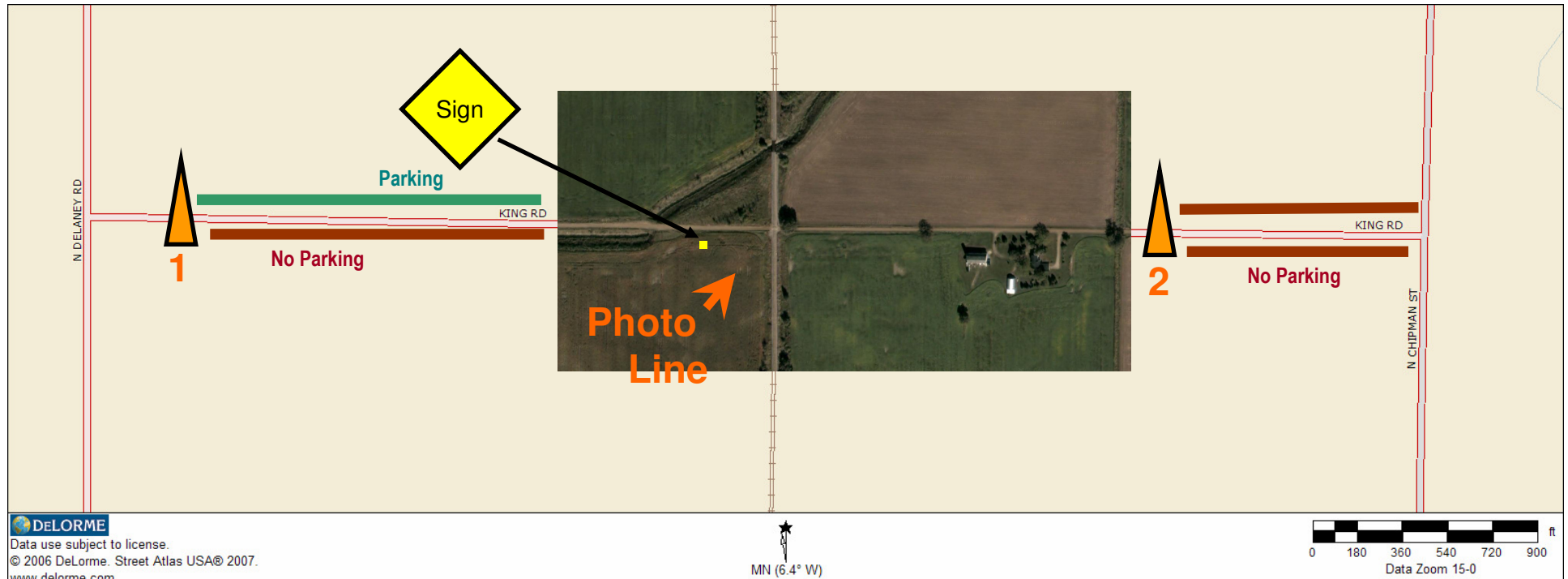
Road Crew Arrive 2:30pm

Train Arrive 2:40pm

First Runby 2:45pm

Train Depart 3:15pm

Road Crew Depart 3:15pm for Carland Road



NOTE: Mark off Carland Road Parking before proceeding to Baldwin Road.

Saturday – 9 - Baldwin Road (AA)

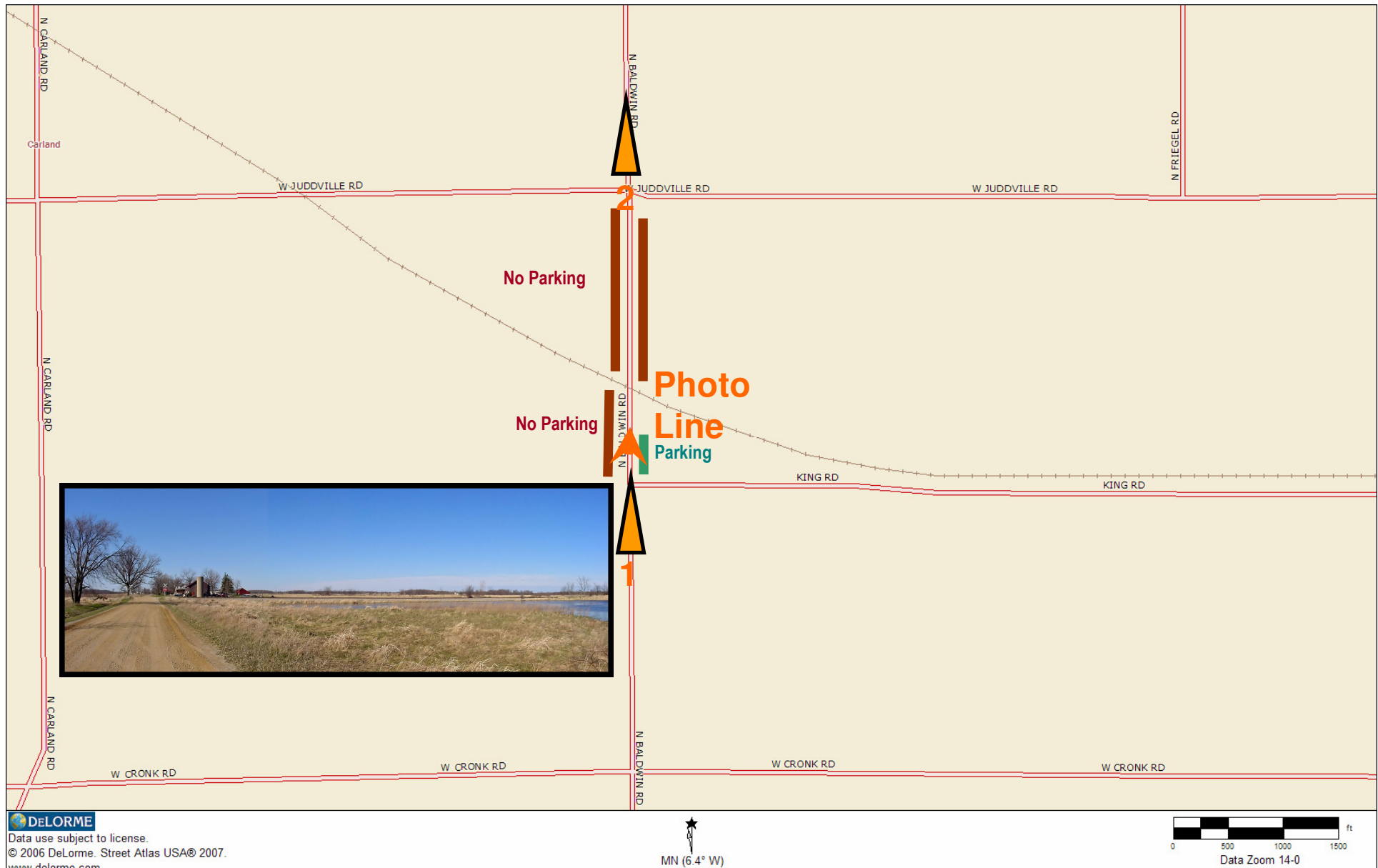
Road Crew Arrive 4:10pm

Train Arrive 4:20pm

First Runby 4:30pm

Road Crew Depart 4:40pm for Riley Road (1K)

Train Depart 4:45pm



Note: Cancelled.

Saturday – 9 - Riley Road / Vincent Road (AA)



Road Crew Arrive 4:45pm

Train Arrive 4:50pm

First Runby 5:00pm

Road Crew Depart 5:20pm for King Road (AA) (1G)

Train Depart 5:25pm



Saturday – 10 - King Road (AA)

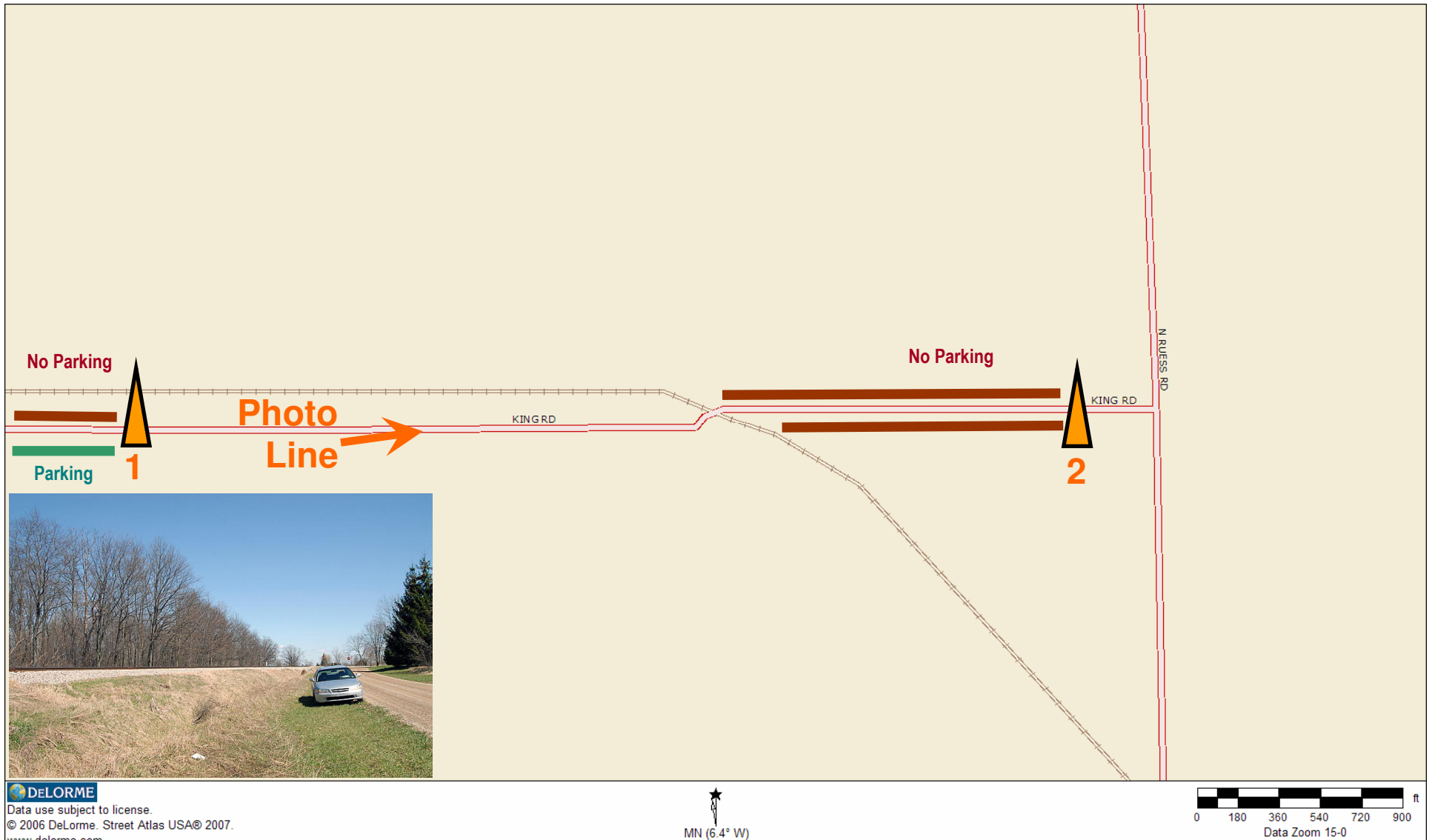
Road Crew Arrive 5:20pm

Train Arrive 5:25pm

First Runby 5:30pm

Road Crew Depart 5:45pm for Carland Road (1J)

Train Depart 5:50pm



Saturday – 11 - Carland Road (AA)

Road Crew Arrive 5:50pm
Train Arrive 6:00pm
First Runby 6:05pm
Train Depart 10:00pm
Road Crew Depart 10:00pm for Hotel

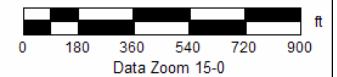
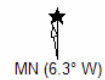


W JUDDVILLE RD

W JUDDVILLE RD



Data use subject to license.
© 2006 DeLorme. Street Atlas USA® 2007.
www.delorme.com



Sunday – 1 - Smith Road / Wilkinson Road (AA)



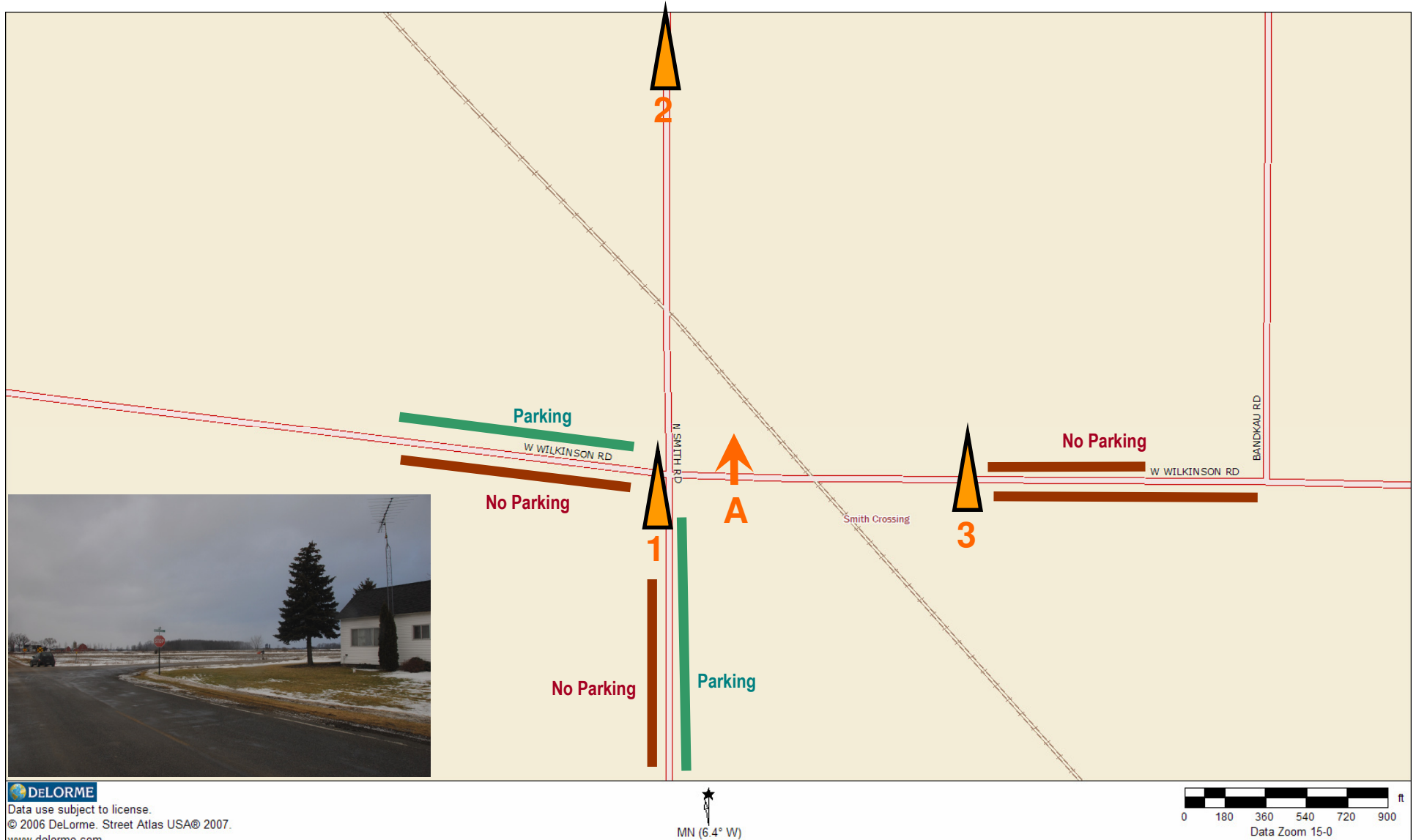
Road Crew Arrive 6:15am

Train Arrive 6:30am

First Runby 6:45am

Train Depart 7:30am

Road Crew Depart 7:30am for Henderson Road (NYC) (1C)



DeLORME

Data use subject to license.

© 2006 DeLorme. Street Atlas USA® 2007.

www.delorme.com

Sunday – 2 - Henderson Road (NYC)



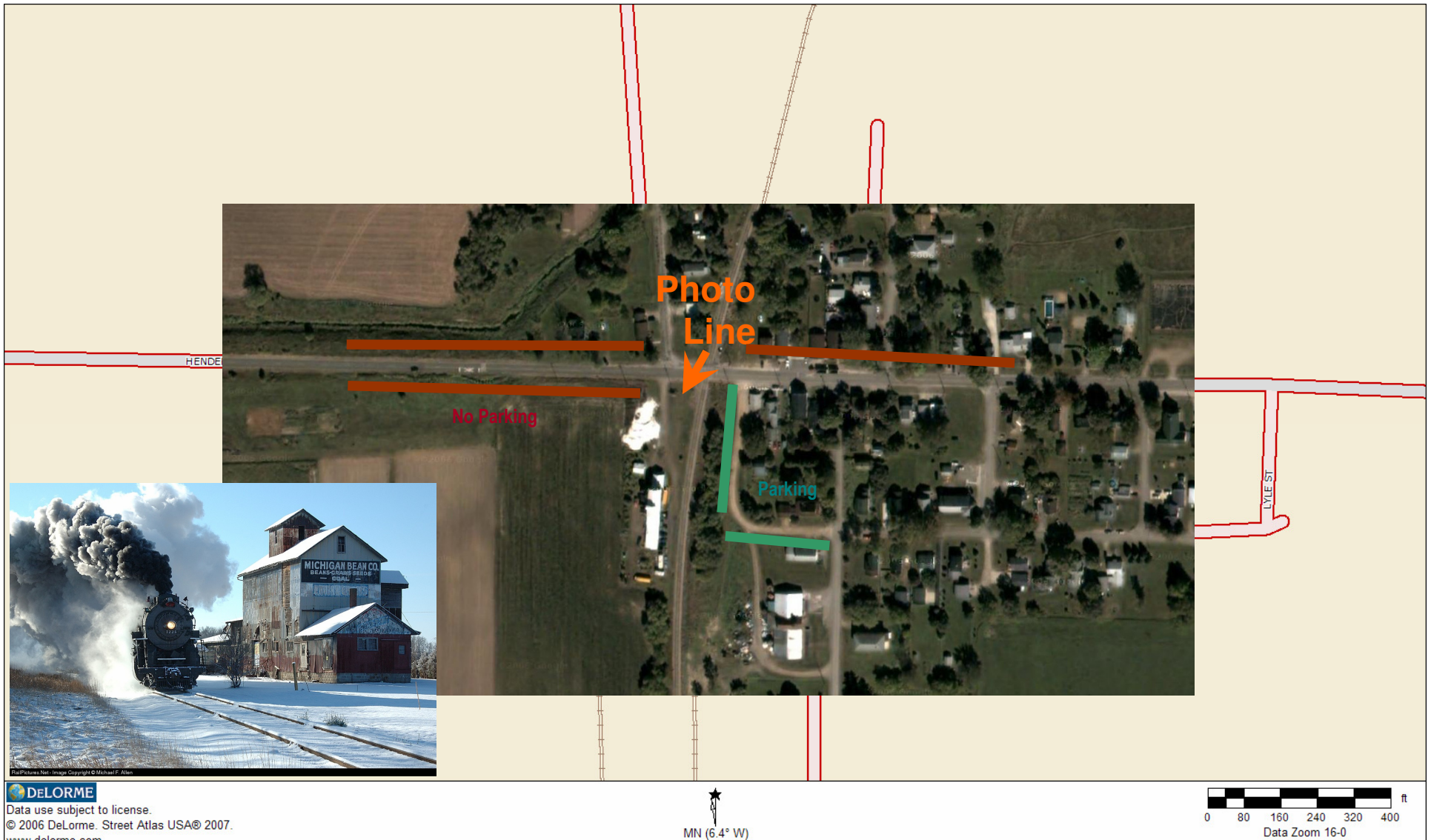
Road Crew Arrive 7:45am

Train Arrive 8:20am

First Runby 8:30am

Road Crew Depart 8:55am for Ferden Road (2F)

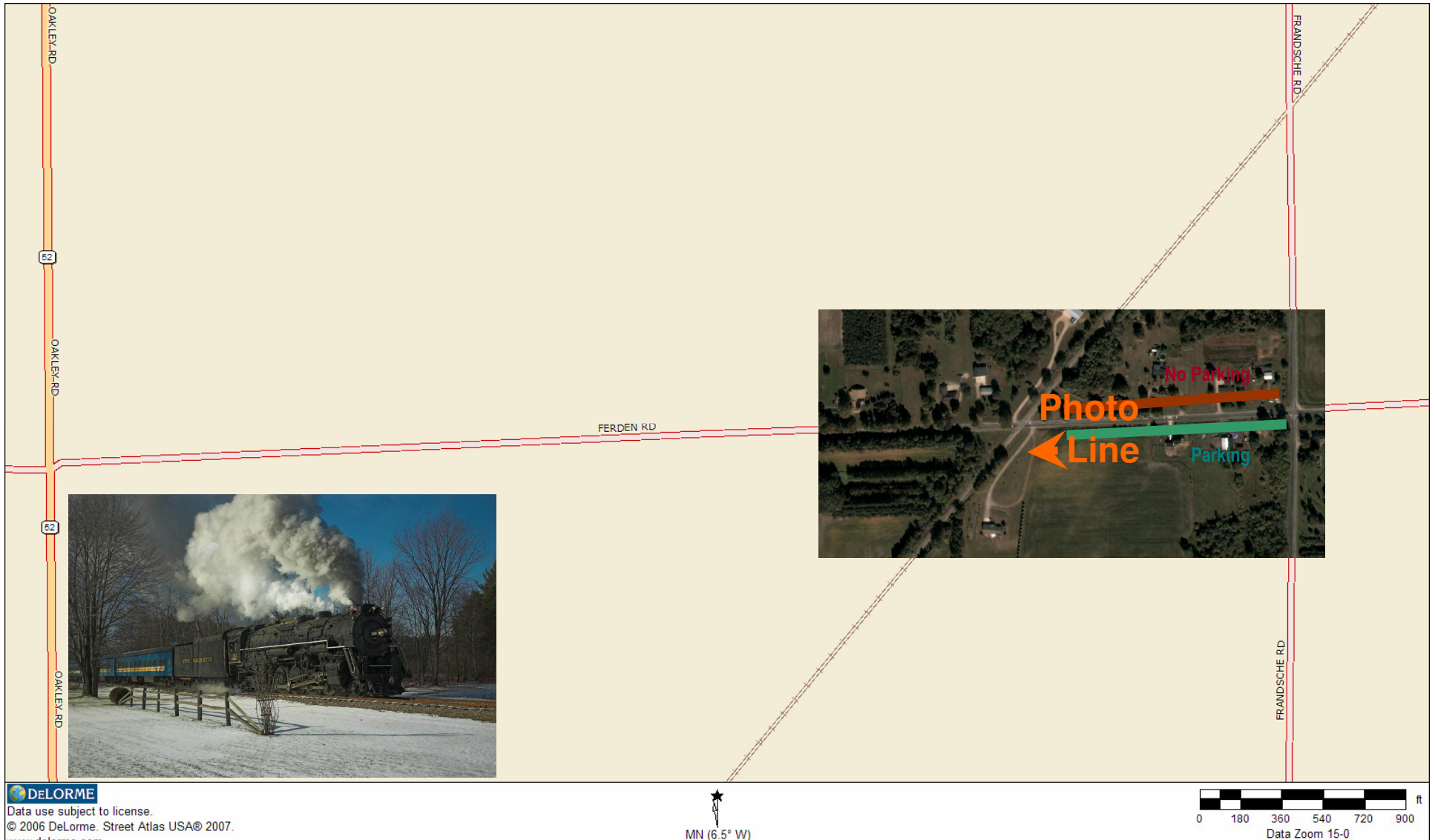
Train Depart 9:00am



Sunday – 3 - Ferden Road (NYC)



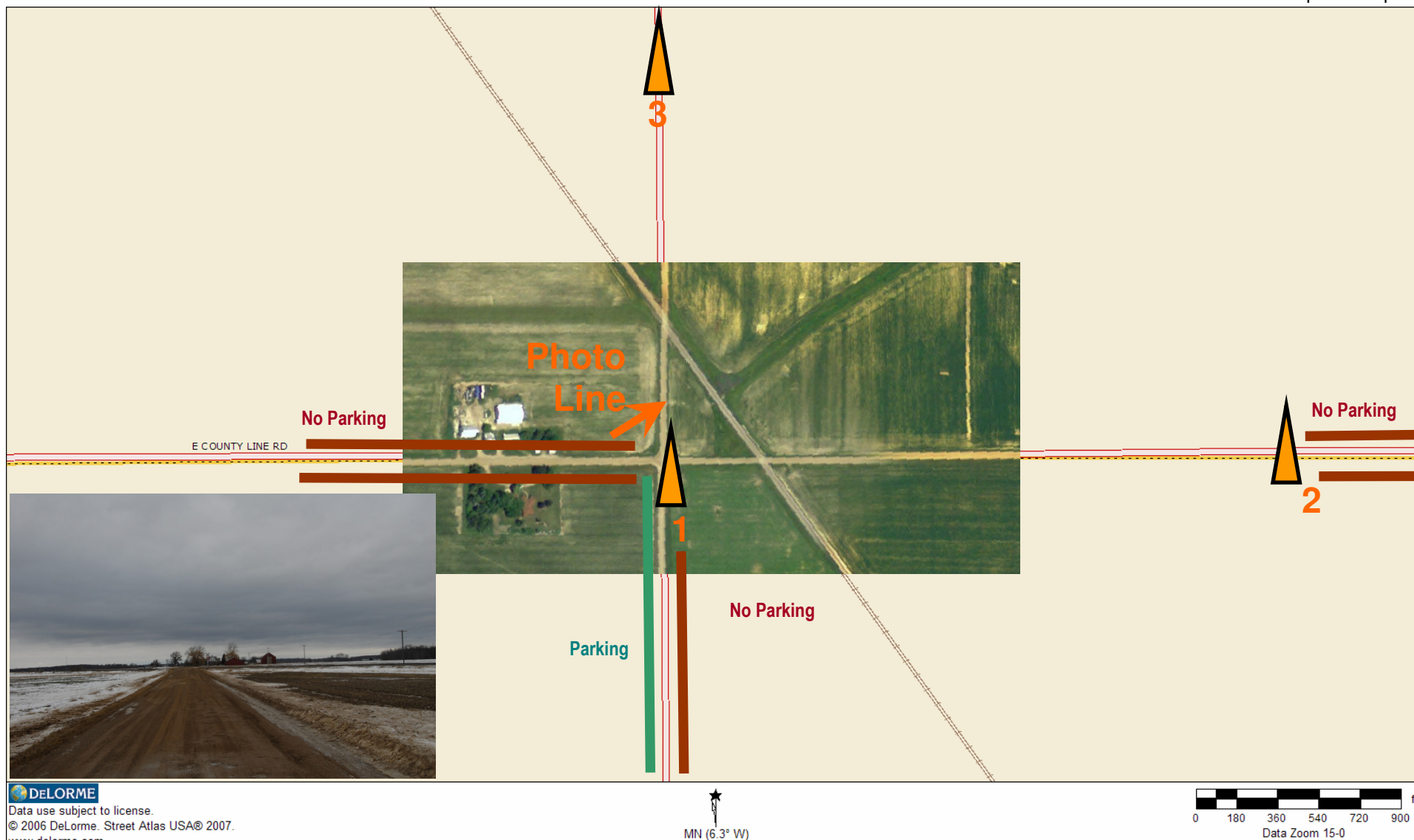
Road Crew Arrive 9:10am
Train Arrive 9:35am
First Runby 9:40am
Road Crew Depart 9:55am for SRI
Train Depart 10:00am



DeLORME

Data use subject to license.
© 2006 DeLorme. Street Atlas USA® 2007.
www.delorme.com

Train Depart 2:30pm

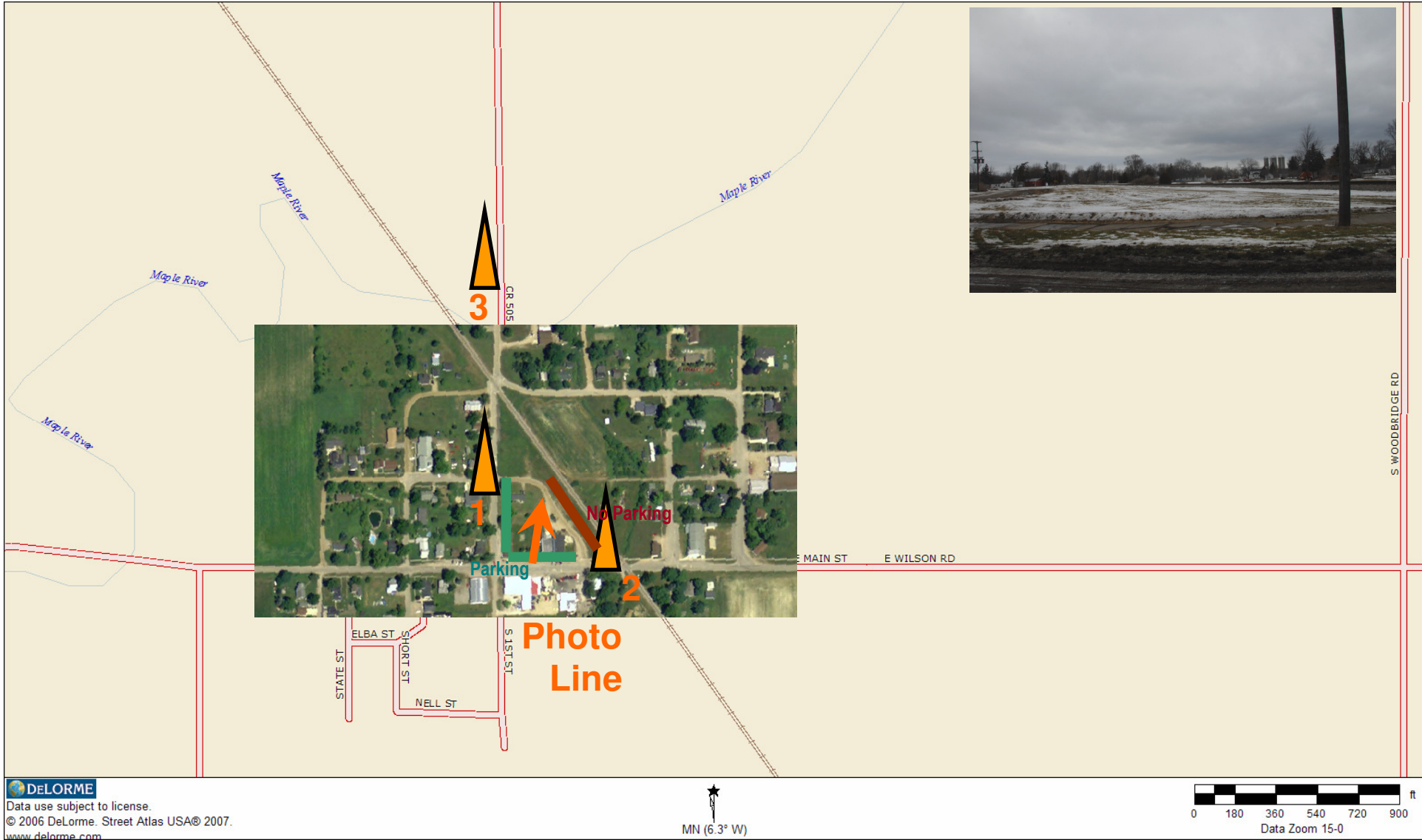


Note: Cancelled.

Sunday – 5 – Barry Road (CR 505) (AA)



Road Crew Arrive 2:35pm
Train Arrive 2:40pm
First Runby 2:45pm
Train Depart 3:05pm
Road Crew Depart 3:05pm for SRI



Sunday – 6 - King Road (NYC)



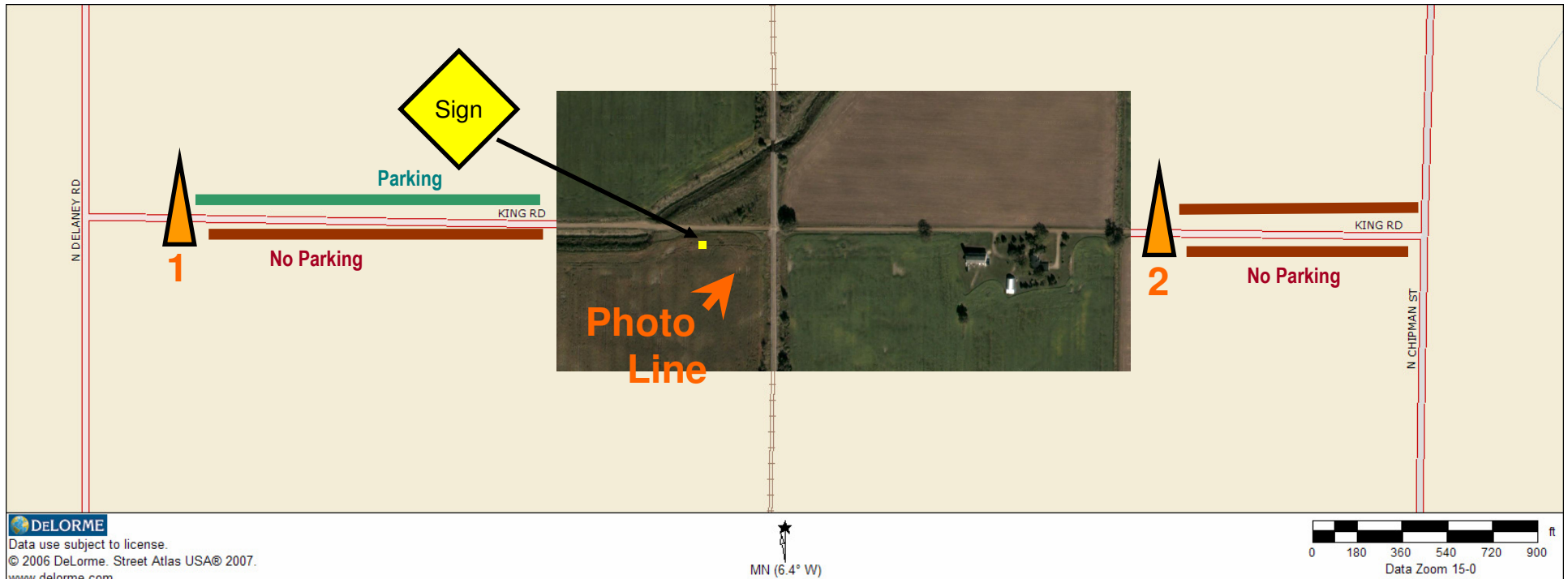
Road Crew Arrive 4:30pm

Train Arrive 4:45pm

First Runby 4:50pm

Road Crew Depart 5:10pm for Epton Road

Train Depart 5:15pm



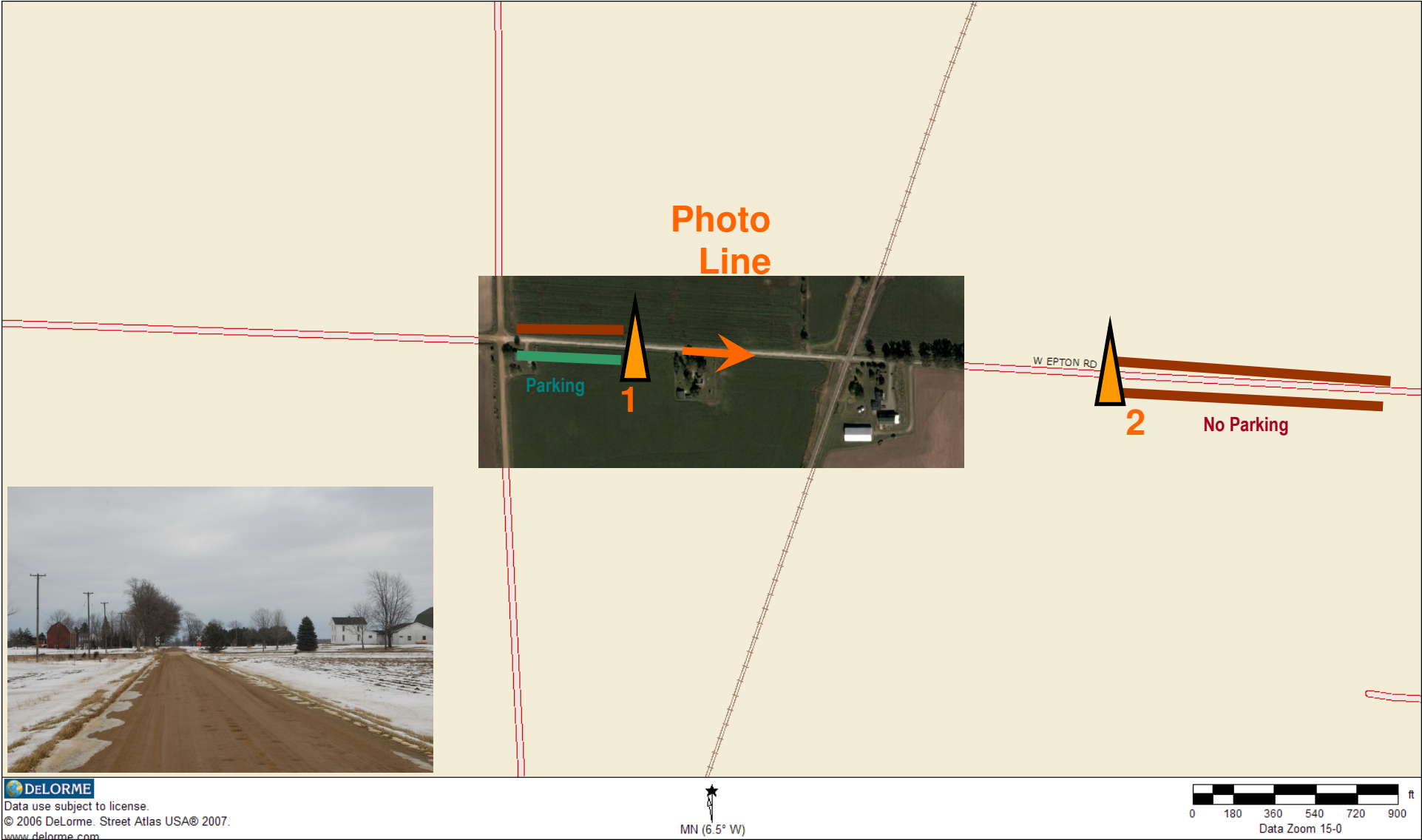
NOTE: Mark off Carland Road Parking before proceeding to Riley Road.

Note: Cancelled.

Sunday – 7 - Epton Road (NYC)



Road Crew Arrive 5:30pm
Train Arrive 5:40pm
First Runby 5:45pm
Road Crew Depart 6:15pm for Henderson Road (1C)
Train Depart 6:20pm

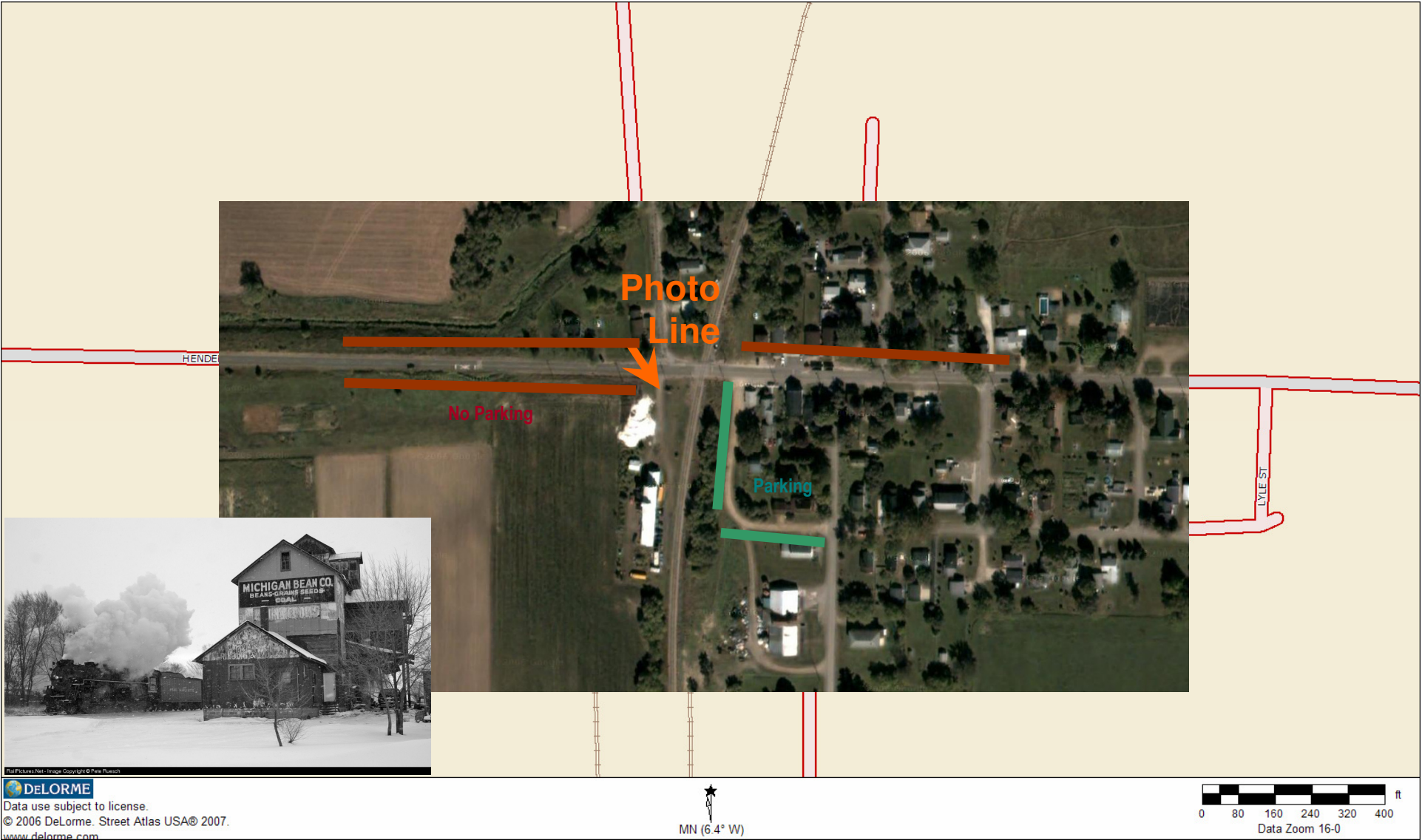


Note: Cancelled.

Sunday – 8 - Henderson Road (NYC)



Road Crew Arrive 6:30pm
Train Arrive 6:40pm
First Runby 6:45pm
Road Crew Depart 7:10pm for Chipman Road (2C)
Train Depart 7:15pm



Note: Cancelled.

Sunday – 9 - Chipman Road (NYC)



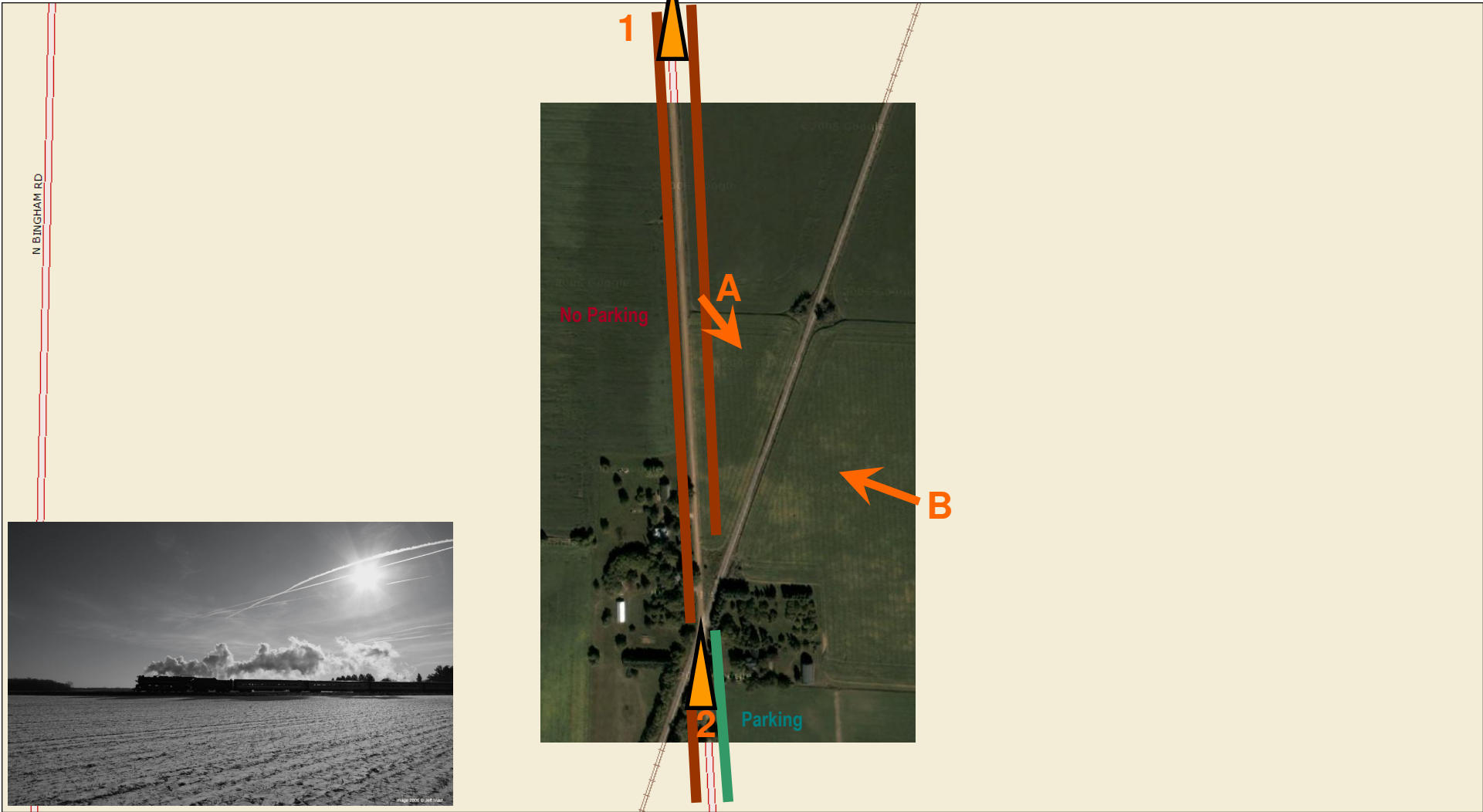
Road Crew Arrive 7:15pm

Train Arrive 7:30pm

First Runby 7:35pm

Train Depart 8:30pm

Road Crew Depart 8:30pm for Henderson Road (1C)



Note: Cancelled.

Sunday – 10 - Henderson Road (NYC)



Road Crew Arrive 8:35pm
Train Arrive 8:45pm
Train Depart 10:00pm
Road Crew Depart 10:00pm for Hotel

