



## Historic Transport Preservation, Inc.

## Steam Specials

### Final Update for the Huckleberry Railroad and Pere Marquette Photo Specials, February 15-16-17, 2008

**Before You Leave**, please use the table on page 3 to confirm your own participation and your car pool assignment, and if necessary to contact your car pool partners. If you see an error or would like to sign up for the Huckleberry Railroad / Alaska 152 special or the Friday night photo special, please let us know.

Also, if we don't already have your mobile telephone number, please log into <http://steamspecials.com>, choose "Update My Info," and enter it. This will help us contact you in case of any last-minute changes.

#### Friday, February 15, 2008 (Huckleberry Railroad / Alaska Railroad 4-6-0 152):

We will board our train at the Huckleberry Railroad's Crossroads Village station at 6:30am. Crossroads Village is located at 6140 Bray Road, Flint, MI, 48505. Our train will depart promptly at 6:45am. Refreshments and lunch will be provided, and we will finish approximately 2:00pm.

[http://www.geneseecountyparks.org/crvhrr\\_map.htm](http://www.geneseecountyparks.org/crvhrr_map.htm)

#### Friday, February 15, 2008 (Pere Marquette 1225 Night Photo Session):

The photo session will be held at the former Grand Trunk Railroad station, one block south of the Steam Railroad Institute (SRI). Photographers will park at SRI, which is located at 405 South Washington Street, Owosso, Michigan, 48867. Sunset is at 6:05pm, but you may want to arrive at the Steam Railroad Institute by 5:30pm, in case there are unplanned, pre-sunset photo opportunities. We expect to begin approximately 6:30pm and conclude at 8:00pm. We will be using floodlights, so if you shoot color film, bring tungsten-balanced film or an 80A filter. (Special Thanks to the Elks Club of Owosso for hosting us and doing much prep work to the station.)

#### Saturday / Sunday, February 16 / 17, 2008 (Pere Marquette 1225):

Maps and Schedules for Saturday and Sunday will be passed out to someone in each car pool on Friday. If no one in your car pool is participating in any Friday event, please contact us to make arrangements to pick up your packet on Friday, or pick them up at the first runby location Saturday. You may download an advance copy of the maps here (schedules not included):

<http://steamspecials.com/files/documents/200802-maps.pdf> (8MB, 11 in. X 17 in.)

On Saturday and Sunday, please make your own arrangements to meet your car pool, and go directly to the first runby location on your own, arriving by 7:15am. The first runby will be at sunrise, approximately 7:30am.

<b>Car Pools:</b>	1	D. Craft, J. Craft, Gaffney	2	Allen, Lab
	3	Gunning, L. Gross, Wrinn	4	B. Raia, M. Raia, Burger
	5	Fowler, Harper, Tidwell	6	Bianchi, McClurg, West
	7	B. Botkin, K. Botkin, Birkinshaw	8	Ahern, Fine, Hand, Thomas
	9	Huxtable, Burkhard, Edmonson	10	Amo, Borg, Koglin
	11	A. Blaszczyk, C. Blaszczyk, J. Blaszczyk	12	C. Muller, G. Muller, Goldman
	13	Bereise, Mast, Valentine	14	Barry, Smith, Lentzner
	15	Milhaupt, Ozanich, Szabo	16	D. Gross, J. Gross, Phillips
	17	Jittler, Mallams, Van Sten	18	Lerro, Rayner

## **Final Update for the February 15-16-17 Photo Specials (cont'd)**

### **Saturday / Sunday, February 16 / 17, 2008 (Pere Marquette 1225) (cont'd):**

We will have fresh coffee and hot water (for tea, hot chocolate, etc.) available throughout the day Saturday and Sunday, as well as granola, chocolate, etc. Lunch will be provided at Roma's, a short distance from SRI. Saturday and Sunday will conclude with a night photo session out on the line, ending approximately 8:00pm.

### **Runby Diagrams**

Our road crews use a packet of runby diagrams which show our intended photo line, and parking, at each photo location. You may download a copy of the runby diagrams we will be using here:

<http://steamspecials.com/files/documents/200802-runbydiagrams.pdf> (9MB, 8.5 in. X 11 in.)

These diagrams will NOT be passed out to car pools. If you would like to refer to them during the event, download and print them on your own.

### **Other Maps**

If you use Delorme Street Atlas or Topo USA software on your PalmOS device, you may download the following map file and install it on your device:

<http://steamspecials.com/files/documents/200802-hhmaps.pdb> (800KB)

### **Communications**

Because mobile phone service in the area can be nonexistent, on Saturday and Sunday we will communicate with our road and caboose crews with FRS / GMRS Radios ("walkie-talkies"). If you would like to monitor our communications using your own radio, tune it to Channel 5 (if your radio uses Motorola channel assignments) or Channel 13 (if your radio uses Icom F21-GM channels).

### **Caboose Option Participants:**

Please see additional information beginning on page 4.

If you have any questions, please contact us. Pack warmly, and we look forward to seeing you in Michigan!

## Participants

Name	E-mail	Huck. RR	PM 1225			Caboose		
		15-Feb	15-Feb	16-17-Feb	Car Pool	Day Seg.	Night Seg.	Meal
Rick Ahern	blades53@comcast.net			Yes	8	12	13	Sat (909)
Mike Allen	mallen9082@aol.com	Yes	Yes	Yes	2	10	14	Sat (909)
Bruce Amo	amob@tir.com		Yes	Yes	10			
Steve Barry	steveb@railfan.com	Yes	Yes	Yes	14	3	2	Sun (2839)
Greg Bereise	gregjb1@sbcglobal.net			Yes	13			
Curt Bianchi	curt@curtbianchi.com		Yes	Yes	6	5	1	Sat (909)
Jake Birkinshaw	pwmm@dial.pipex.com			Yes	7			
Andrew Blaszczyk	islessabres2@yahoo.com		Yes	Yes	11			
Chris Blaszczyk	cblaz521@yahoo.com		Yes	Yes	11			
Joseph Blaszczyk	jfbfaz@yahoo.com		Yes	Yes	11			
Ken Borg	ken49146@aol.com		Yes	Yes	10			
Bill Botkin	webotkin@ecentral.com			Yes	7			
Kate Botkin				Yes	7			
Chris Burger	rrcjb@aol.com			Yes	4			
Ron Burkhard	ronburk@dotnet.com		Yes	Yes	9			
Danah Craft	danah@danahcraft.com	Yes	Yes	Yes	1		1 (2839)	Sat (2839)
John Craft	johnacraft@johnacraft.com	Yes	Yes	Yes	1		1 (2839)	Sat (2839)
Harold Edmonson			Yes	Yes	9			
Howard Fine	fineh@rochester.rr.com		Yes	Yes	8			
Steve Fowler	sdfandsif@msn.com	Yes	Yes	Yes	5			
Mitch Goldman	mgoldman@aol.com		Yes	Yes	12			
Dave Gross	wcproductions@aol.com		Yes	Yes	16			
Jean Gross				Yes	16			
Larry Gross	ljgross@optonline.net			Yes	3			
Jim Gunning	jgunning@cfl.rr.com	Yes	Yes	Yes	3			
Victor Hand			Yes	Yes	8			
Joe Harper	train671@aol.com	Yes	Yes	Yes	5			
Nils Huxtable				Yes	9			
Robert Jittler	robtj760-paypal@yahoo.com		Yes	Yes	17			
Jim Koglin	jimkoglin@wowway.com			Yes	10			
Tim Lab	timlab@shianet.org		Yes	Yes	2	16	15	Sat (2839)
Jay Lentzner	jay850@aol.com	Yes	Yes	Yes	14			
Alan Mallams	<a href="mailto:alankmallams.photo@comcast.net">alankmallams.photo@comcast.net</a>	Yes	Yes	Yes	17			
Jeff Mast	jtmast@mac.com		Yes	Yes	13			
Ned McClurg	nedsma@aol.com		Yes	Yes	6	6	1	Sun (2839)
Robert Milhaupt	rmil@ti.com			Yes	15			
Chris Muller	cmuller@railserve.com	Yes	Yes	Yes	12			
Gail Muller	gailmuller@verizon.net	Yes	Yes	Yes	12			
Jack Ozanich				Yes	15			
Don Phillips	don@donphillips.net			Yes	16			
Bill Prescott	matchbk2@comcast.net	Yes	Yes		NA			
Bill Raia	braia@core.com		Yes	Yes	4	19	14 (2839)	Sun (909)
Mike Raia	mraia@core.com		Yes	Yes	4	19	14 (2839)	Sun (909)
Jeff Smith	smith@drexel.edu	Yes	Yes	Yes	14	18	14	Sun (2839)
Irene Szabo	treeweenie@aol.com		Yes	Yes	13	17	2	Sat (2839)
Jim Thomas	jtandet@comcast.net		Yes	Yes	8			
Steve Tidwell	hiprofit@comcast.net	Yes	Yes	Yes	5	7	15	Sat (2839)
Mike Valentine	cinderpath@comcast.net			Yes	13			
Ad Van Sten	ad.vansten@wanadoo.nl			Yes	17			
John West	jbwest@att.net			Yes	6			
Donald Woshlo	donw@thehenryford.org	Yes			NA			
Jim Wrinn	wrinnbo@aol.com			Yes	3			

## Special Instructions for Caboose Option Participants (CPs)

Recapping the original announcement: *"The Extra-Fare Caboose Option consists of the following opportunities:*

*(a) special daytime and night time photo opportunities in the caboose;*

Pere Marquette caboose A909 will be at the rear of our train during the weekend, with 2 "crew" assigned to it at any given time. One CP at a time may ride during photo runbys.

Steve Zuiderveen's Ann Arbor 2839 will also be available for your use. On Saturday morning it will be moved from SRI to Henderson, where it will be used in the special photo opportunity for CPs, and returned to SRI after the Saturday evening night photo session. It will also be available Saturday and Sunday if you would like to break away from shooting PM 1225 for a while.

CPs may also shoot in either caboose at the Saturday night photo session, or A909 during the Sunday night photo session.

*(b) a special runby featuring PM 1225;*

On Saturday morning CPs will have a special runby opportunity featuring Ann Arbor 2839 on the siding in Henderson. Shoot from inside (framing 1225 in the door), in the cupola, or alongside the caboose (flagman on the ground) as 1225's train passes.

*(c) the opportunity to ride between photo locations in the caboose (limit one segment per extra-fare purchase);*

Each CP will actually get TWO riding segments during the weekend – one in daylight (one person per segment), and one in darkness (two people per segment). Your riding segments will be indicated on the schedule included in your car pool package so that you can make arrangements with your pool mates. You are welcome to trade segments with another CP if you like.

If a segment is shown on the schedule as "Available," you may ride that segment (you may not be alone).

*(d) lunch cooked in the caboose by the crew."*

Lunch will be served in one of the two cabooses, either Saturday or Sunday, three persons plus crew.

Each Caboose Option Participant will find three assignments in his/her map package: a "night time" riding segment (which may be before dawn), a daytime riding segment, and a lunch appointment. Assignments are also shown on the schedule pages you will receive in Michigan. You are welcome to swap segments with other CPs if you wish.

**If your daytime riding segment is a reverse move, you will board after the last runby. If you are riding a forward-moving segment, you will board AS THE TRAIN REVERSES FOR THE LAST RUNBY at that location.**

**You are responsible for making sure you are at the boarding location at boarding time; there is no guarantee anyone will remind you. You are also responsible for making sure your car pool meets you at the end of your riding segment, if necessary.**

## Caboose Option Participant Assignments

Segment	Start	End	PM A909	AA 2839
1-Sat AM (Rev)	Owosso (SRI)	Henderson (NYC)	Bianchi / McClurg	Craft / Craft
2-Sat AM (Rev)	Henderson (NYC)	Chipman Rd. / Epton Rd. (NYC)	Barry / Szabo	Available At Henderson
3-Sat AM (Fwd)	Chipman Rd. / Epton Rd. (NYC)	King Rd. (NYC)	Barry	Available At Henderson
4-Sat AM (Rev)	King Rd. (NYC)	Henderson (NYC)	Lerro	Available At Henderson
5-Sat AM (Fwd)	Henderson (NYC)	Owosso (SRI)	Bianchi	Available At Henderson
SAT Lunch			Ahern / Allen / Bianchi	Lab / Szabo / Tidwell
6-Sat PM (Rev)	Owosso (SRI)	Riley Rd. (AA)	McClurg	Available At Henderson
7-Sat PM (Fwd)	Riley Rd. (AA)	Baldwin Rd. (AA)	Tidwell	Available At Henderson
8-Sat PM (Fwd)	Baldwin Rd. (AA)	King Rd. (AA)	Available (short)	Available At Henderson
9-Sat PM (Fwd)	King Rd. (AA)	Smith Rd. (AA)	Mast	Available At Henderson
10-Sat PM (Fwd)	Smith Rd. (AA)	Owosso (Cedar St.)	Allen	Available At Henderson
11-Sat PM (Rev)	Owosso (Cedar St.)	King Rd. (NYC)	Available	Available At Henderson
12-Sat PM (Rev)	King Rd. (NYC)	Henderson (NYC)	Ahern	Available At Henderson
13-Sat PM (Fwd)	Henderson (NYC)	King Rd. (NYC)	Ahern	Mast
Night Photos			NA	NA
14-Sat PM (Fwd)	King Rd. (NYC)	Owosso (SRI)	Allen / Smith	Raia / Raia
Segment	Start	End	PM A-909 Riders	AA 2839 Riders
15-Sun AM (Fwd)	Owosso (SRI)	King Rd. (NYC)	Lab / Tidwell	Available At SRI
16-Sun AM (Fwd)	King Rd. (NYC)	Henderson (NYC)	Lab	Available At SRI
17-Sun AM (Fwd)	Henderson (NYC)	Ferden Rd. (NYC)	Szabo	Available At SRI
18-Sun AM (Rev)	Ferden Rd. (NYC)	Owosso (SRI)	Smith	Available At SRI
SUN Lunch			Raia / Raia / Lerro	Barry / McClurg / Smith
19-Sun AM (Fwd)	Owosso (SRI)	County Line Rd. (AA)	Raia / Raia	NA
20-Sun AM (Rev)	County Line Rd. (AA)	King Rd. (AA)	Available	NA
21-Sun AM (Fwd)	King Rd. (AA)	Baldwin Rd. / Carland Rd. (AA)	Available (short)	NA
22-Sun AM (Fwd)	Baldwin Rd. / Carland Rd. (AA)	Meridian Rd. (AA)	Available (short)	NA
23-Sun AM (Rev)	Meridian Rd. (AA)	Carland Rd. (AA)	Available	NA
Night Photos			NA	NA
24-Sun AM (Rev)	Carland Rd. (AA)	Owosso (SRI)	Available	NA

Cross-reference your assignments above with the schedule (passed out in Michigan) to the approximate time you should board. This is especially important for pre-dawn assignments.

Lunch Saturday aboard AA 2839 will be at Henderson Siding.

Lunch Saturday aboard PM A909 will be in the Owosso yard. Board the caboose at Washington Street (adjacent to the Steam Railroading Institute) approximately 11:00am, when the train returns to Owosso. Please be waiting at the crossing when the train arrives, so as not to delay any switching movements during our lunch break.

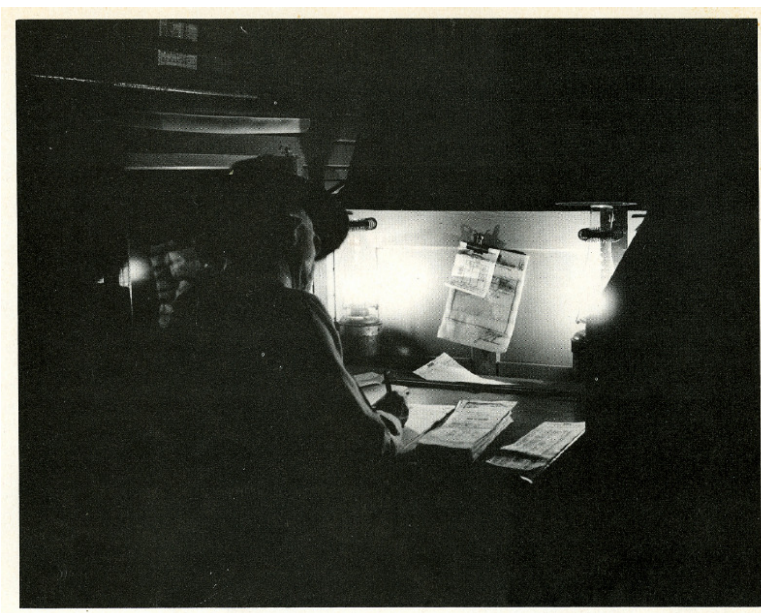
Lunch Sunday aboard AA 2839 will be at the Steam Railroading Institute.

Lunch Saturday aboard PM A909 will be in the Owosso yard. Board the caboose at Washington Street (adjacent to the Steam Railroading Institute) approximately 11:30am, when the train returns to Owosso. Please be waiting at the crossing when the train arrives, so as not to delay any switching movements during our lunch break.

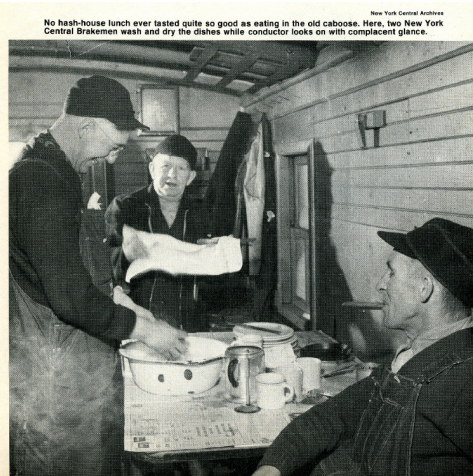


Here are a few photo comparisons to get your ideas started.

B&W Photos by Wayne Leeman from April 1979 "TRAINS" except as noted. Color photos by John Craft and Fred Stevens.







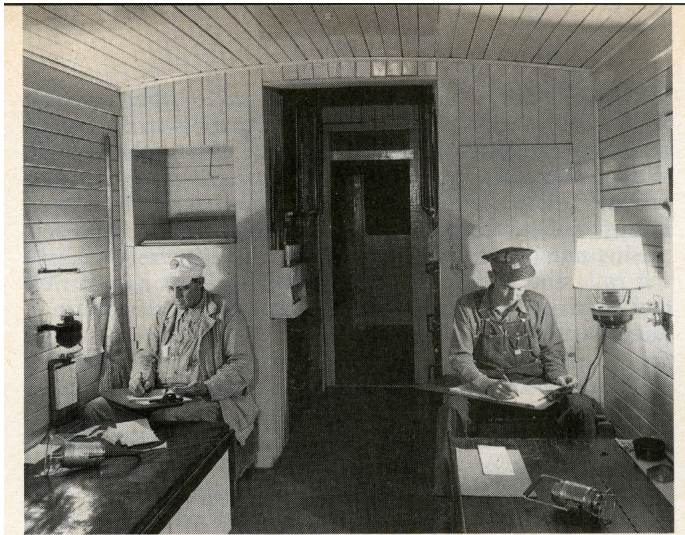
New York Central Archives



Don Ball



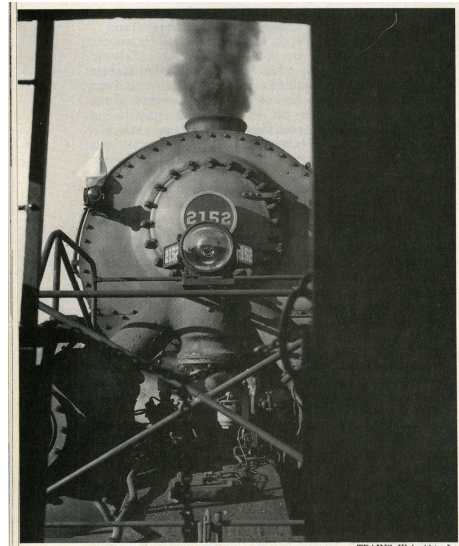




Seaboard Air Line.



Philip R. Hastings.



TRAINS: W.A. Akin Jr.







