

Friday – 1 – Sheepscot



Begin 6:00am
End 6:20am

Pre-departure “night photo session.”

Hand car in front of section house.

Men at switch, opening shed, at section house, at water tank, etc. Conversations with section crew, water service man, etc.

View from inside coach of activity around section house.



Friday – 2 – Alna Center



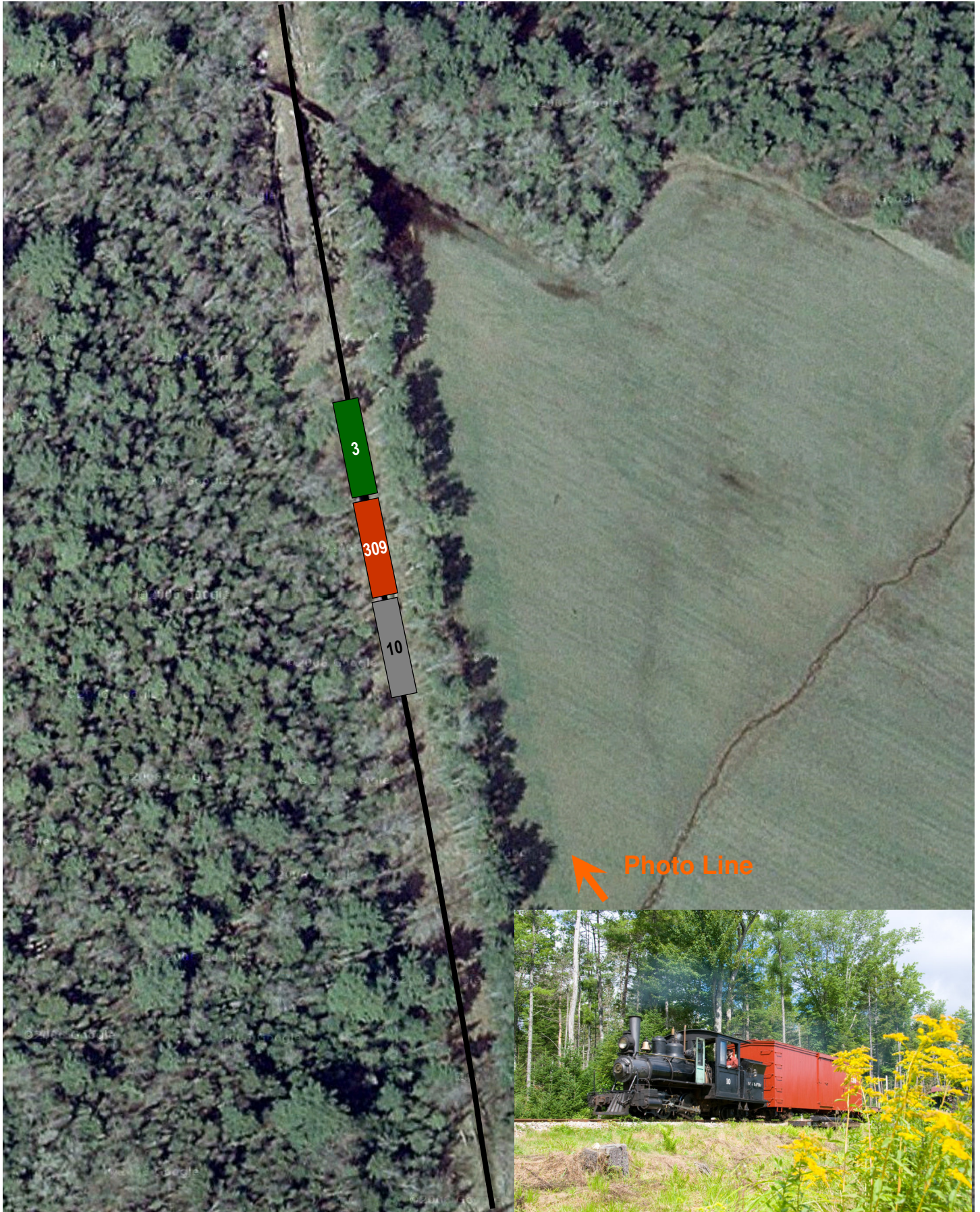
Train Arrive 6:30am
First Runby 6:40am
Train Depart for MP 6.7 (1J) 7:00am



Friday – 3 – Albee's Field



Train Arrive 7:05am
First Runby 7:10am
Train Depart for Sheepscot 7:30am



Friday – 4 – Alna Center



Train Arrive 8:20am

First Runby 8:25am

Train Depart for Sutter's Crossing (1D) 8:45am

Track inspection via hand car prior to train's arrival?

Platform activity:
Flagging train / conductor visible in vestibule / whistle response.
Loading / unloading mail / express
Woman with groceries
Arrival of car, kid gets out with egg crates and boards train.
Etc.



First Runby 8:55am

Train Depart for Sheepscot 9:10am



Friday – 6 – Alna Center



Train Arrive 9:55am
First Runby 10:00am
Train Depart for Humason Trestle (1F) 10:20am

Handcar in siding when train arrives with photographers.

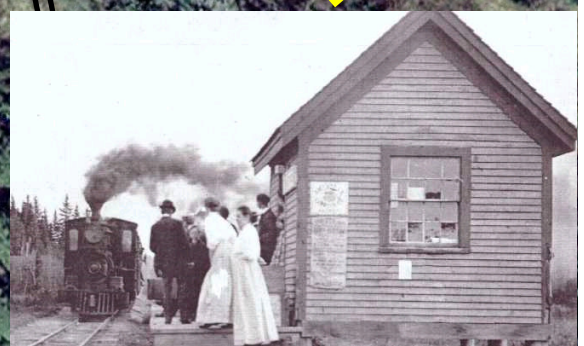
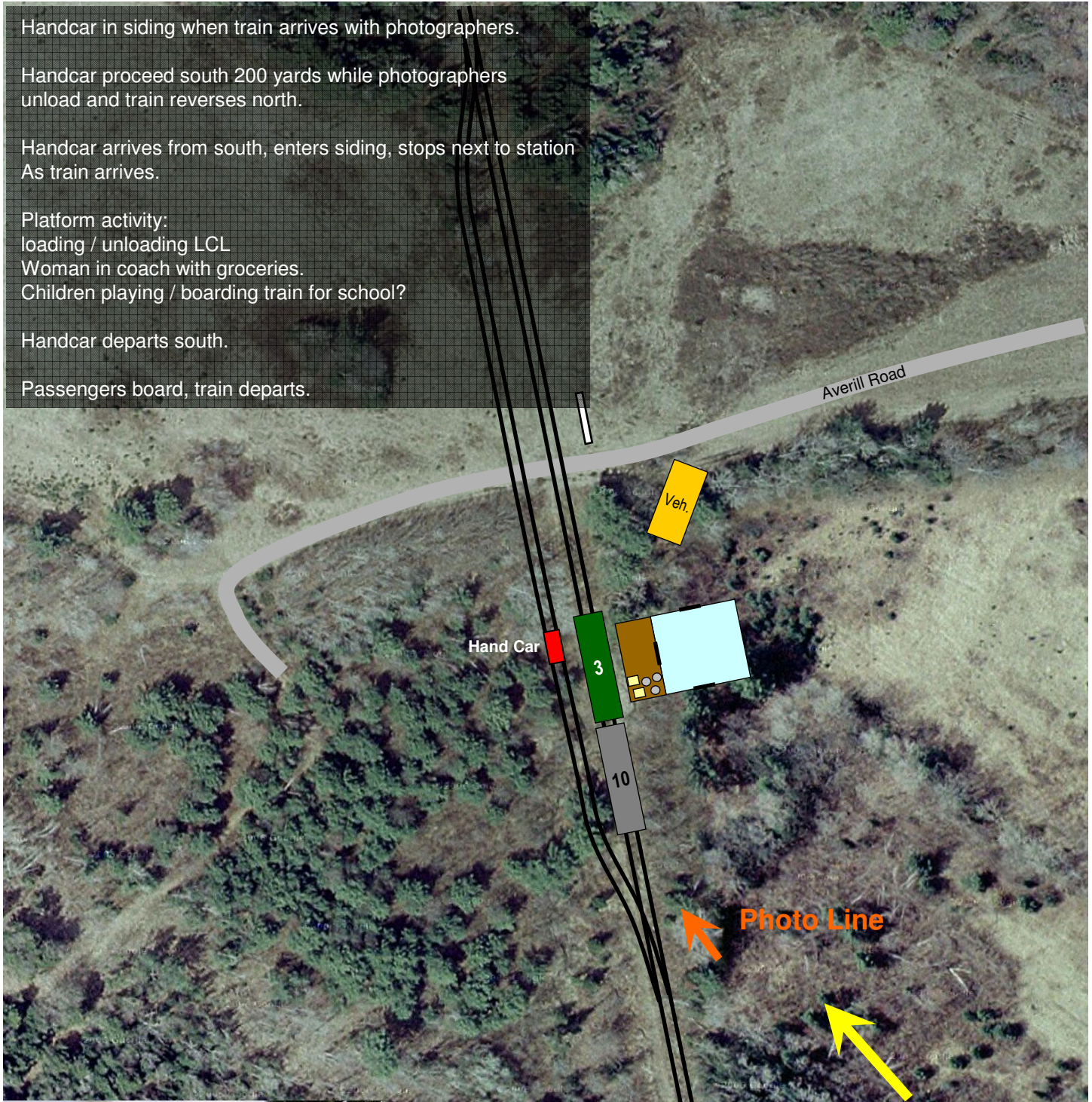
Handcar proceed south 200 yards while photographers unload and train reverses north.

Handcar arrives from south, enters siding, stops next to station
As train arrives.

Platform activity:
loading / unloading LCL
Woman in coach with groceries.
Children playing / boarding train for school?

Handcar departs south.

Passengers board, train departs.



Friday – 7 – Humason Trestle



Train Arrive 10:25am
First Runby 10:30am
Train Depart for Sheepscot (1A) 10:50am



Friday – 8 – Humason Trestle



Train Arrive 11:30am

First Runby 11:35am

Train Depart for Brook Crossing (1C) 11:50am



Friday – 9 – Brook Crossing



Train Arrive 11:55am
First photo runby 12:01pm
Train Depart for Sheepscot (1A) 12:15pm



Friday – 10 – Sheepscot



Train Arrive 12:20pm
Static scenes, runby (station arrival) at 1:15pm
Train Depart for Sutter's Crossing (1D) 1:30pm



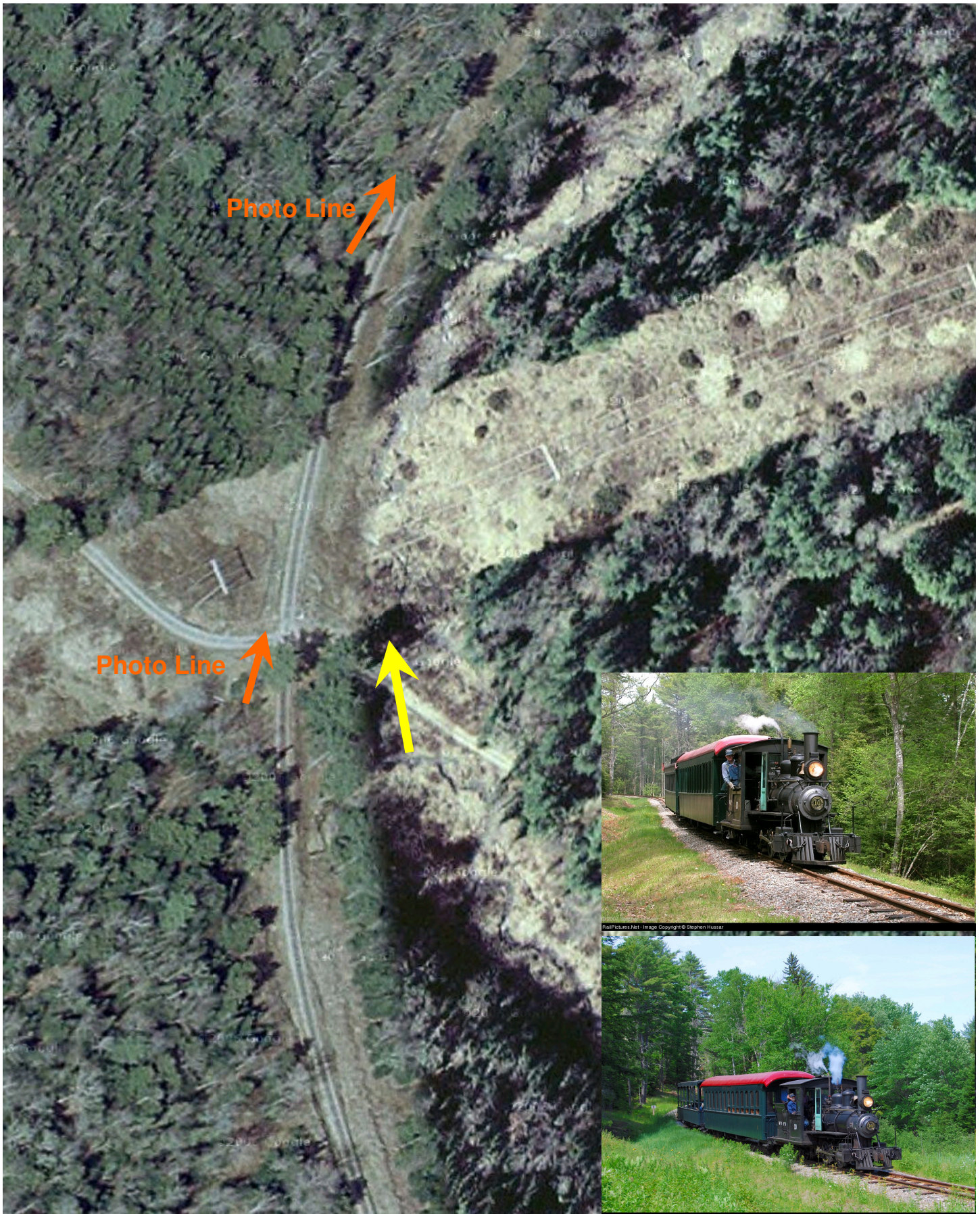
Friday – 11 – Sutter's Crossing



Train Arrive 1:35pm

First Runby 1:40pm

Train Depart for Albee's Crossing 2:10pm



Friday – 12 – Albee's Crossing



Train Arrive 2:20pm
First Runby 2:25pm
Train Depart for Sheepscot 2:45pm



Friday – 13 – Sheepscot



Train Arrive 3:00pm
First photo runby 3:05pm
Train Depart for ? (1?) 3:45pm

Hand car arriving and being taken off tracks at section house.

Train pulling up and taking water.
Conversations with section crew, water service man, etc.



Friday – 15 – Alna Center



Train Arrive 5:15pm

First Runby 5:20pm

Sunset 6:15pm

For one of the silhouette runbys, train stops with caboose on crossing, conductor replaces flags with markers (?).



Friday – 16 – Alna Center



Night photo session begins 7:00pm
Train Depart for Sheepscot (1A) 8:30pm



B4



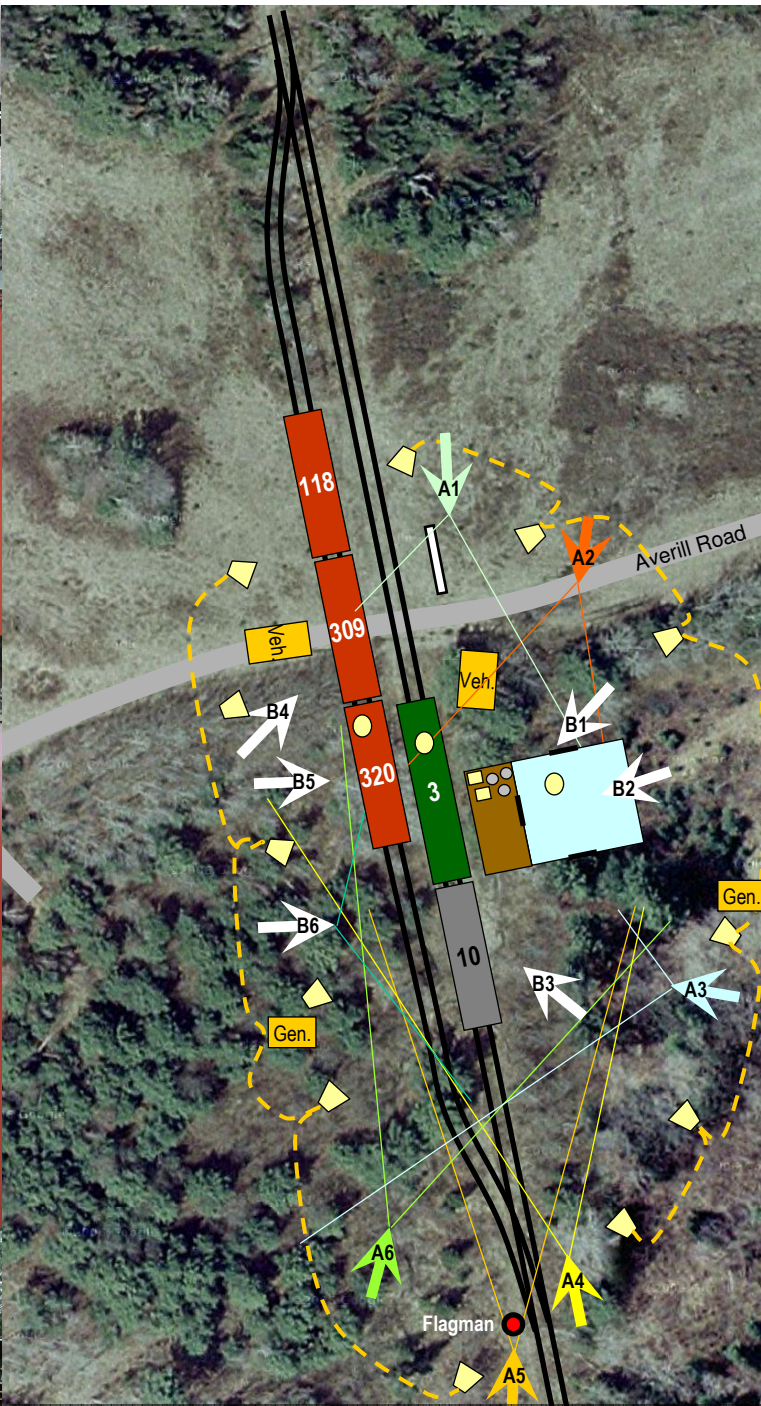
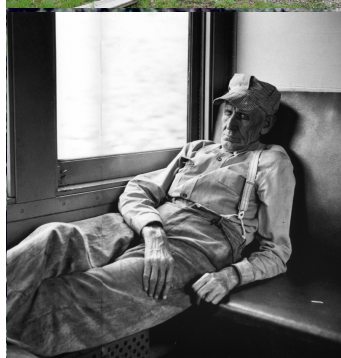
B5



B5



B6



A1



B2



A3



A4



A5

The night photo scene will allow you to move as you like between the positions indicated. Please be considerate of the other photographers as you shoot.

From sunset until 7:00pm, you may shoot inside the coach, the way car (caboose), and the station. (We will have a variety of “passengers” and “employees” available.)

From 7:00pm until 7:45pm you may rotate at your choosing between positions A1 through A6.

From 7:45pm until 8:15pm we will “move in close” and rotate at your choosing between positions B1 through B6.